



积层贴片陶瓷片式电容器

C 系列 一般等级 中耐压 (100 to 630V)

Type:

C1005 [EIA CC0402]
C1608 [EIA CC0603]
C2012 [EIA CC0805]
C3216 [EIA CC1206]
C3225 [EIA CC1210]
C4532 [EIA CC1812]
C5750 [EIA CC2220]

Issue date:
May 2014



使用注意事项

使用本产品前，请务必阅读

安全注意事项



注意

1. 计划将本产品目录中记载的产品用于可能对人身安全或对社会造成重大损失的用途时，请务必通知本公司的销售窗口。
2. 本产品目录中记载的产品因改良及其他原因可能在不经预告的情况下进行变更或停止供应。
3. 关于本产品目录中记载的产品，本公司备有记载了各产品的规格及安全注意事项的“交货规格书”。在选用产品时，建议签定交货规格书。
4. 在出口本产品目录中记载的产品时，有时会被归为“外汇及外贸管理法”中规定的管制货物等。在这种情况下，需要有依据该法规定的出口许可。
5. 关于本产品目录的内容，未经本公司许可不得擅自转载或复制。
6. 因使用本产品目录中记载的产品而发生涉及本公司或第三者的知识产权及其他权利的问题时，本公司对此将不承担责任。并且，本公司不对该等权利的实施权办理许可。
7. 本产品目录适用于从本公司或本公司的正规代理商购买的产品。从其他第三者购买的产品不在适用范围之内。

注意：伴随网站的更新，由于系统限制的原因以及统一产品目录型号的需要，从2013年1月开始，TDK将在产品目录中使用新型号。

新目录型号将在以后所有根据产品目录订货时使用，但不适用于OEM订购。

目录型号的最后5个与产品标签上的交货型号（内部控制编号）不同，请注意。

详细信息请联系当地TDK销售代表。

（构成例）

产品目录发行日期	目录型号	交货型号（交货标签上的标识）
2012 年 12 月以前	C1608C0G1E103J(080AA)	C1608C0G1E103JT000N
2013 年 1 月及以后	C1608C0G1E103J080AA	C1608C0G1E103JT000N



C 系列

中耐压 (100 to 630V)

Type: C1005 [EIA CC0402]、C1608 [EIA CC0603] C2012 [EIA CC0805]、C3216 [EIA CC1206]、C3225 [EIA CC1210]、C4532 [EIA CC1812]、C5750 [EIA CC2220]

特点



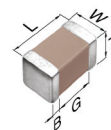
- 额定电压100V ~ 630V，电容最高到15μF。
- 随着陶瓷电介质层的薄层化和积层技术的进步，实现了高电容量。
- 残余电感低，保证优异的频率特性。
- 直流偏置特性优异。
- 丰富的额定电压产品系列，可满足客户的各种选择需求。

用途



- 电源的缓冲电路
- 数码相机的闪光电路
- 功率因数改善
- 电源输入、输出滤波器
- 等离子显示器中的驱动电路
- 噪音旁路

形状与尺寸



L	主体长度
W	主体宽度
T	主体高度
B	端子宽度
G	端子间距



目录型号的识别法

C • 3225 • X7R • 2A • 105 • K • 200 • A • A

系列名称

尺寸 L x W (mm)

代码	长度	宽度	端子
C1005	1.00 ± 0.05	0.50 ± 0.05	0.10 min.
C1608	1.60 ± 0.10	0.80 ± 0.10	0.20 min.
C2012	2.00 ± 0.20	1.25 ± 0.20	0.20 min.
C3216	3.20 ± 0.20	1.60 ± 0.20	0.20 min.
C3225	3.20 ± 0.40	2.50 ± 0.30	0.20 min.
C4532	4.50 ± 0.40	3.20 ± 0.40	0.20 min.
C5750	5.70 ± 0.40	5.00 ± 0.40	0.20 min.

*尺寸公差表示的是具有代表性的数值

温度特性

温度特性	温度系数或电容变化率	温度范围
CH	0±60 ppm/°C	-25 to +85°C
C0G	0±30 ppm/°C	-55 to +125°C
JB	±10%	-25 to +85°C
X5R	±15%	-55 to +85°C
X6S	±22%	-55 to +105°C
X7R	±15%	-55 to +125°C
X7S	±22%	-55 to +125°C
X7T	+22/-33%	-55 to +125°C

额定电压 (直流)

代码	电压 (直流)
2A	100V
2E	250V
2V	350V
2W	450V
2J	630V

标称电容 (pF)

电容量以pF (微微法拉) 为单位，并用三个文字表示。最初两个文字表示电容的第一位和第二位有效数字。第三个文字表示接在有效数字后的零数。含有小数点时用R表示。

例: 0R2 = 0.2pF; 103 = 10,000pF; 105 = 1,000,000pF = 1,000nF = 1μF

电容容差

代码	容差
C	± 0.25pF
D	± 0.50pF
F	± 1%
G	± 2%
J	± 5%
K	± 10%
M	± 20%

标称厚度

代码	厚度	代码	厚度
050	0.50 mm	130	1.30 mm
060	0.60 mm	160	1.60 mm
080	0.80 mm	200	2.00 mm
085	0.85 mm	230	2.30 mm
115	1.15 mm	250	2.50 mm
125	1.25 mm	280	2.80 mm
		320	3.20 mm

包装形式

代码	形式
A	178° 卷筒、4mm 间距
B	178° 卷筒、2mm 间距
K	178° 卷筒、8mm 间距

特殊指定代码

代码	说明
A、B、C	本公司内部管理符号



EIA CC0402 [C1005]

电容范围图

温度特性: C0G (0 ± 30ppm/°C)、CH (0 ± 60ppm/°C)、X7S (±22%)
额定电压: 100V (2A)

电容		电容容差	C0G	CH	X7S
(pF)	代码		2A (100V)	2A (100V)	2A (100V)
100	101	J: ± 5% K: ± 10% M: ± 20%			
120	121				
150	151				
180	181				
220	221				
270	271				
330	331				
390	391				
470	471				
1,000	102				
1,500	152				
2,200	222				
3,300	332				
4,700	472				
6,800	682				
10,000	103				

标准厚度
0.50 mm



电容 范围图

EIA CC0603 [C1608]

电容范围图

温度特性: C0G ($0 \pm 30\text{ppm}/^\circ\text{C}$)、CH ($0 \pm 60\text{ppm}/^\circ\text{C}$)、JB ($\pm 10\%$)、X5R ($\pm 15\%$)、X7R ($\pm 15\%$)、X7S ($\pm 22\%$)
 额定电压: 250V (2E)、100V (2A)

电容		电容容差	C0G		CH		JB	X5R	X7R	X7S
(pF)	代码		2E (250V)	2A (100V)	2E (250V)	2A (100V)	2A (100V)	2A (100V)	2A (100V)	2A (100V)
1	010	C : $\pm 0.25\text{pF}$								
1.5	1R5	D : $\pm 0.50\text{pF}$								
2	020	F : $\pm 1\%$								
2.2	2R2	G : $\pm 2\%$								
3	030	J : $\pm 5\%$								
3.3	3R3	K : $\pm 10\%$								
4	040	M : $\pm 20\%$								
4.7	4R7									
5	050									
6	060									
6.8	6R8									
7	070									
8	080									
9	090									
10	100									
12	120									
15	150									
18	180									
22	220									
27	270									
33	330									
39	390									
47	470									
56	560									
68	680									
82	820									
100	101									
120	121									
150	151									
180	181									
220	221									
270	271									
330	331									
390	391									
470	471									
560	561									
680	681									
820	821									
1,000	102									
1,200	122									
1,500	152									
1,800	182									
2,200	222									
2,700	272									
3,300	332									
4,700	472									
6,800	682									
10,000	103									
15,000	153									
22,000	223									
33,000	333									
47,000	473									
68,000	683									
100,000	104									

标准厚度

0.80 mm



电容范围图

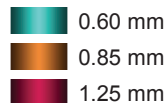
EIA CC0805 [C2012]

电容范围图

温度特性: C0G ($0 \pm 30\text{ppm}/^\circ\text{C}$)、CH ($0 \pm 60\text{ppm}/^\circ\text{C}$)
 额定电压: 450V (2W)、250V (2E)、100V (2A)

电容		电容容差	C0G			CH		
(pF)	代码		2W (450V)	2E (250V)	2A (100V)	2W (450V)	2E (250V)	2A (100V)
100	101	J : $\pm 5\%$ K : $\pm 10\%$ M : $\pm 20\%$						
120	121							
150	151							
180	181							
220	221							
270	271							
330	331							
390	391							
470	471							
560	561							
680	681							
820	821							
1,000	102							
1,200	122							
1,500	152							
1,800	182							
2,200	222							
2,700	272							
3,300	332							
3,900	392							
4,700	472							
5,600	562							
6,800	682							
8,200	822							
10,000	103							

标准厚度

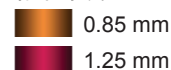


电容范围图

温度特性: JB ($\pm 10\%$)、X5R ($\pm 15\%$)、X7R ($\pm 15\%$)、X7S ($\pm 22\%$)、X7T ($+22/-33\%$)
 额定电压: 450V (2W)、350V (2V)、250V (2E)、100V (2A)

电容		电容容差	JB		X5R		X7R		X7S	X7T		
(pF)	代码		2E (250V)	2A (100V)	2E (250V)	2A (100V)	2E (250V)	2A (100V)	2A (100V)	2W (450V)	2V (350V)	2E (250V)
1,000	102	J : $\pm 5\%$ K : $\pm 10\%$ M : $\pm 20\%$										
1,500	152											
2,200	222											
3,300	332											
4,700	472											
6,800	682											
10,000	103											
15,000	153											
22,000	223											
33,000	333											
47,000	473											
68,000	683											
100,000	104											
150,000	154											
220,000	224											
330,000	334											
470,000	474											
680,000	684											
1,000,000	105											

标准厚度



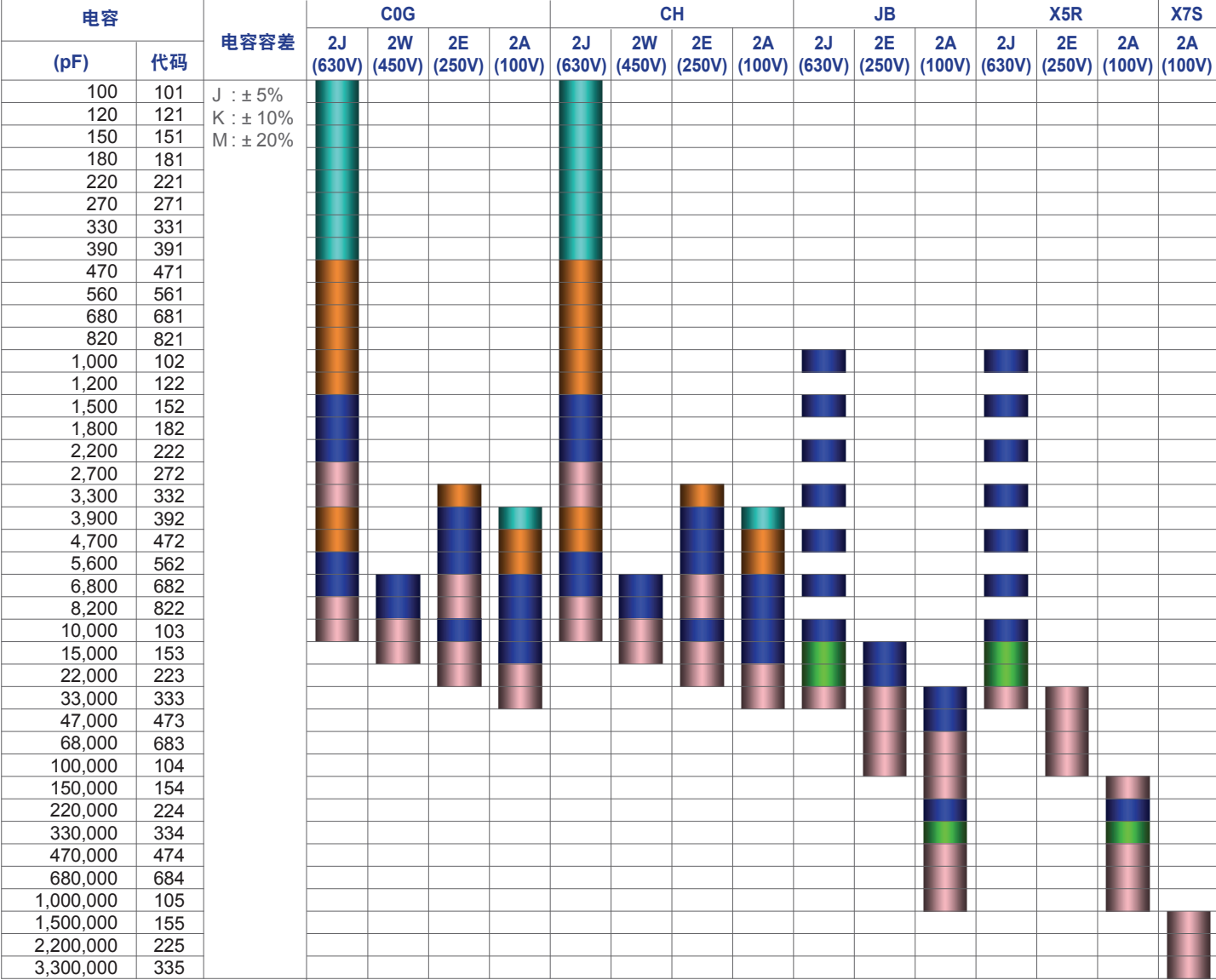


电容
范围图

EIA CC1206 [C3216]

电容范围图

温度特性: C0G (0 ± 30ppm/°C)、CH (0 ± 60ppm/°C)、JB (±10%)、X5R (±15%)、X7S (±22%)
额定电压: 630V (2J)、450V (2W)、250V (2E)、100V (2A)



标准厚度

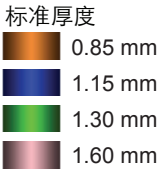
0.60 mm 0.85 mm 1.15 mm 1.30 mm 1.60 mm



EIA CC1206 [C3216]

电容范围图
温度特性: X7R (±15%)、X7S (±22%)、X7T (+22/-33%)
额定电压: 630V (2J)、450V (2W)、350V (2V)、250V (2E)、100V (2A)

电容		电容容差	X7R			X7T			
(pF)	代码		2J (630V)	2E (250V)	2A (100V)	2J (630V)	2W (450V)	2V (350V)	2E (250V)
1,000	102	K: ± 10% M: ± 20%							
1,500	152								
2,200	222								
3,300	332								
4,700	472								
6,800	682								
10,000	103								
15,000	153								
22,000	223								
33,000	333								
47,000	473								
68,000	683								
100,000	104								
150,000	154								
220,000	224								
330,000	334								
470,000	474								
680,000	684								
1,000,000	105								





电容 范围图

EIA CC1210 [C3225]

电容范围图

温度特性: C0G (0 ±30ppm/°C)、CH (0 ±60ppm/°C)、JB (±10%)
 额定电压: 630V (2J)、450V (2W)、250V (2E)、100V (2A)

电容		电容容差	C0G				CH				JB		
(pF)	代码		2J (630V)	2W (450V)	2E (250V)	2A (100V)	2J (630V)	2W (450V)	2E (250V)	2A (100V)	2J (630V)	2E (250V)	2A (100V)
3,900	392	J : ± 5% K : ± 10% M : ± 20%											
4,700	472												
5,600	562												
6,800	682												
8,200	822												
10,000	103												
15,000	153												
22,000	223												
33,000	333												
47,000	473												
68,000	683												
100,000	104												
150,000	154												
220,000	224												
330,000	334												
470,000	474												
680,000	684												
1,000,000	105												
1,500,000	155												
2,200,000	225												

标准厚度

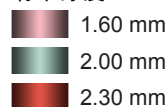


电容范围图

温度特性: X5R (±15%)、X7R (±15%)、X7S (±22%)、X7T (+22/-33%)
 额定电压: 630V (2J)、450V (2W)、250V (2E)、100V (2A)

电容		电容容差	X5R			X7R			X7S	X7T		
(pF)	代码		2J (630V)	2E (250V)	2A (100V)	2J (630V)	2E (250V)	2A (100V)	2A (100V)	2J (630V)	2W (450V)	2E (250V)
47,000	473	K : ± 10% M : ± 20%										
68,000	683											
100,000	104											
150,000	154											
220,000	224											
330,000	334											
470,000	474											
680,000	684											
1,000,000	105											
1,500,000	155											
2,200,000	225											
3,300,000	335											
4,700,000	475											

标准厚度





电容 范围图

EIA CC1812 [C4532]

电容范围图

温度特性: C0G (0 ±30ppm/°C)、CH (0 ±60ppm/°C)、JB (±10%)

额定电压: 630V (2J)、450V (2W)、250V (2E)、100V (2A)

静电容量		許容差	C0G				CH				JB		
(pF)	コード		2J (630V)	2W (450V)	2E (250V)	2A (100V)	2J (630V)	2W (450V)	2E (250V)	2A (100V)	2J (630V)	2E (250V)	2A (100V)
8,200	822	J : ± 5%											
10,000	103	K : ± 10%											
15,000	153	M : ± 20%											
22,000	223												
33,000	333												
47,000	473												
68,000	683												
100,000	104												
150,000	154												
220,000	224												
330,000	334												
680,000	684												
1,000,000	105												
1,500,000	155												
2,200,000	225												

標準厚み

1.60 mm

2.00 mm

2.30 mm

2.50 mm

3.20 mm

电容范围图

温度特性: X5R (±15%)、X7R (±15%)、X7S (±22%)、X7T (+22/-33%)

额定电压: 630V (2J)、450V (2W)、250V (2E)、100V (2A)

电容		电容容差	X5R		X7R			X7S	X7T		
(pF)	代码		2J (630V)	2E (250V)	2J (630V)	2E (250V)	2A (100V)	2A (100V)	2J (630V)	2W (450V)	2E (250V)
68,000	683	K : ± 10%									
100,000	104	M : ± 20%									
150,000	154										
220,000	224										
300,000	304										
330,000	334										
470,000	474										
680,000	684										
1,000,000	105										
1,500,000	155										
2,200,000	225										
3,300,000	335										
4,700,000	475										

标准厚度

1.60 mm

2.00 mm

2.30 mm

2.50 mm



电容范围图

EIA CC2220 [C5750]

电容范围图

温度特性: C0G ($0 \pm 30\text{ppm}/^\circ\text{C}$)、CH ($0 \pm 60\text{ppm}/^\circ\text{C}$)
 额定电压: 630V (2J)、450V (2W)、250V (2E)、100V (2A)

电容		电容容差	C0G				CH				标准厚度
(pF)	代码		2J (630V)	2W (450V)	2E (250V)	2A (100V)	2J (630V)	2W (450V)	2E (250V)	2A (100V)	
68,000	683	K: $\pm 10\%$ J: $\pm 5\%$									2.30 mm
100,000	104										2.80 mm
150,000	154										2.80 mm

电容范围图

温度特性: JB ($\pm 10\%$)、X5R ($\pm 15\%$)、X6S ($\pm 22\%$)
 额定电压: 630V (2J)、250V (2E)、100V (2A)

电容		电容容差	JB			X5R			X6S	标准厚度
(pF)	代码		2J (630V)	2E (250V)	2A (100V)	2J (630V)	2E (250V)	2A (100V)	2W (450V)	
150,000	154	K: $\pm 10\%$ M: $\pm 20\%$								1.60 mm
220,000	224									2.30 mm
330,000	334									2.50 mm
470,000	474									2.50 mm
680,000	684									2.50 mm
1,000,000	105									2.50 mm
1,500,000	155									2.50 mm
2,200,000	225									2.50 mm
3,300,000	335									2.50 mm
4,700,000	475									2.50 mm

电容范围图

温度特性: X7R ($\pm 15\%$)、X7S ($\pm 22\%$)、X7T ($+22/-33\%$)
 额定电压: 630V (2J)、450V (2W)、250V (2E)、100V (2A)

电容		电容容差	X7R			X7S	X7T			标准厚度
(pF)	代码		2J (630V)	2E (250V)	2A (100V)	2A (100V)	2J (630V)	2W (450V)	2E (250V)	
150,000	154	K: $\pm 10\%$ M: $\pm 20\%$								1.60 mm
220,000	224									2.00 mm
330,000	334									2.30 mm
470,000	474									2.50 mm
680,000	684									2.50 mm
1,000,000	105									2.50 mm
1,500,000	155									2.50 mm
2,200,000	225									2.50 mm
3,300,000	335									2.50 mm
4,700,000	475									2.50 mm
6,800,000	685									2.50 mm
10,000,000	106									2.50 mm
15,000,000	156									2.50 mm



电容 范围表

种类 1 (温度补偿用)

温度特性: C0G (-55 ~ +125°C、0 ± 30 ppm/°C)

电容	尺寸	厚度 (mm)	电容容差	目录型号			
				额定电压 Edc : 630V	额定电压 Edc : 450V	额定电压 Edc : 250V	额定电压 Edc : 100V
1 pF	1608	0.80 ± 0.10	± 0.25pF				C1608C0G2A010C080AA
1.5 pF	1608	0.80 ± 0.10	± 0.25pF				C1608C0G2A1R5C080AA
2 pF	1608	0.80 ± 0.10	± 0.25pF				C1608C0G2A020C080AA
2.2 pF	1608	0.80 ± 0.10	± 0.25pF				C1608C0G2A2R2C080AA
3 pF	1608	0.80 ± 0.10	± 0.25pF				C1608C0G2A030C080AA
3.3 pF	1608	0.80 ± 0.10	± 0.25pF				C1608C0G2A3R3C080AA
4 pF	1608	0.80 ± 0.10	± 0.25pF				C1608C0G2A040C080AA
4.7 pF	1608	0.80 ± 0.10	± 0.25pF				C1608C0G2A4R7C080AA
5 pF	1608	0.80 ± 0.10	± 0.25pF				C1608C0G2A050C080AA
6 pF	1608	0.80 ± 0.10	± 0.50pF				C1608C0G2A060D080AA
6.8 pF	1608	0.80 ± 0.10	± 0.50pF				C1608C0G2A6R8D080AA
7 pF	1608	0.80 ± 0.10	± 0.50pF				C1608C0G2A070D080AA
8 pF	1608	0.80 ± 0.10	± 0.50pF				C1608C0G2A080D080AA
9 pF	1608	0.80 ± 0.10	± 0.50pF				C1608C0G2A090D080AA
10 pF	1608	0.80 ± 0.10	± 0.50pF				C1608C0G2A100D080AA
12 pF	1608	0.80 ± 0.10	± 5%				C1608C0G2A120J080AA
15 pF	1608	0.80 ± 0.10	± 5%				C1608C0G2A150J080AA
18 pF	1608	0.80 ± 0.10	± 5%				C1608C0G2A180J080AA
22 pF	1608	0.80 ± 0.10	± 5%				C1608C0G2A220J080AA
27 pF	1608	0.80 ± 0.10	± 5%				C1608C0G2A270J080AA
33 pF	1608	0.80 ± 0.10	± 5%				C1608C0G2A330J080AA
39 pF	1608	0.80 ± 0.10	± 5%				C1608C0G2A390J080AA
47 pF	1608	0.80 ± 0.10	± 5%				C1608C0G2A470J080AA
56 pF	1608	0.80 ± 0.10	± 5%				C1608C0G2A560J080AA
68 pF	1608	0.80 ± 0.10	± 5%				C1608C0G2A680J080AA
82 pF	1608	0.80 ± 0.10	± 5%				C1608C0G2A820J080AA
100 pF	1005	0.50 ± 0.05	± 10%				C1005C0G2A101K050BA
			± 5%				C1005C0G2A101J050BA
	1608	0.80 ± 0.10	± 10%		C1608C0G2E101K080AA		C1608C0G2A101K080AA
			± 5%		C1608C0G2E101J080AA		C1608C0G2A101J080AA
			± 2%				C1608C0G2A101G080AA
			± 1%				C1608C0G2A101F080AA
	2012	0.60 ± 0.15	± 10%		C2012C0G2W101K060AA		
			± 5%		C2012C0G2W101J060AA		
	3216	0.60 ± 0.15	± 10%	C3216C0G2J101K060AA			
			± 5%	C3216C0G2J101J060AA			
120 pF	1005	0.50 ± 0.05	± 10%				C1005C0G2A121K050BA
			± 5%				C1005C0G2A121J050BA
	1608	0.80 ± 0.10	± 10%		C1608C0G2E121K080AA		C1608C0G2A121K080AA
			± 5%		C1608C0G2E121J080AA		C1608C0G2A121J080AA
	2012	0.60 ± 0.15	± 10%		C2012C0G2W121K060AA		
			± 5%		C2012C0G2W121J060AA		
	3216	0.60 ± 0.15	± 10%	C3216C0G2J121K060AA			
			± 5%	C3216C0G2J121J060AA			
150 pF	1005	0.50 ± 0.05	± 10%				C1005C0G2A151K050BA
			± 5%				C1005C0G2A151J050BA
	1608	0.80 ± 0.10	± 10%		C1608C0G2E151K080AA		C1608C0G2A151K080AA
			± 5%		C1608C0G2E151J080AA		C1608C0G2A151J080AA
	2012	0.60 ± 0.15	± 10%		C2012C0G2W151K060AA		
			± 5%		C2012C0G2W151J060AA		
	3216	0.60 ± 0.15	± 10%	C3216C0G2J151K060AA			
			± 5%	C3216C0G2J151J060AA			
180 pF	1005	0.50 ± 0.05	± 10%				C1005C0G2A181K050BA
			± 5%				C1005C0G2A181J050BA
	1608	0.80 ± 0.10	± 10%		C1608C0G2E181K080AA		C1608C0G2A181K080AA
			± 5%		C1608C0G2E181J080AA		C1608C0G2A181J080AA
	2012	0.60 ± 0.15	± 10%		C2012C0G2W181K060AA		
			± 5%		C2012C0G2W181J060AA		
	3216	0.60 ± 0.15	± 10%	C3216C0G2J181K060AA			
			± 5%	C3216C0G2J181J060AA			



电容 范围表

种类 1 (温度补偿用)

温度特性: C0G (-55 ~ +125°C、0 ± 30 ppm/°C)

电容	尺寸	厚度 (mm)	电容容差	目录型号 额定电压 Edc : 630V	额定电压 Edc : 450V	额定电压 Edc : 250V	额定电压 Edc : 100V
220 pF	1005	0.50 ± 0.05	± 10% ± 5%				C1005C0G2A221K050BA C1005C0G2A221J050BA
	1608	0.80 ± 0.10	± 10% ± 5%			C1608C0G2E221K080AA C1608C0G2E221J080AA	C1608C0G2A221K080AA C1608C0G2A221J080AA
	2012	0.60 ± 0.15	± 10% ± 5%		C2012C0G2W221K060AA C2012C0G2W221J060AA		
	3216	0.60 ± 0.15	± 10% ± 5%	C3216C0G2J221K060AA C3216C0G2J221J060AA			
270 pF	1005	0.50 ± 0.05	± 10% ± 5%				C1005C0G2A271K050BA C1005C0G2A271J050BA
	1608	0.80 ± 0.10	± 10% ± 5%			C1608C0G2E271K080AA C1608C0G2E271J080AA	C1608C0G2A271K080AA C1608C0G2A271J080AA
	2012	0.60 ± 0.15	± 10% ± 5%		C2012C0G2W271K060AA C2012C0G2W271J060AA		
	3216	0.60 ± 0.15	± 10% ± 5%	C3216C0G2J271K060AA C3216C0G2J271J060AA			
330 pF	1005	0.50 ± 0.05	± 10% ± 5%				C1005C0G2A331K050BA C1005C0G2A331J050BA
	1608	0.80 ± 0.10	± 10% ± 5%			C1608C0G2E331K080AA C1608C0G2E331J080AA	C1608C0G2A331K080AA C1608C0G2A331J080AA
	2012	0.60 ± 0.15	± 10% ± 5%		C2012C0G2W331K060AA C2012C0G2W331J060AA		
	3216	0.60 ± 0.15	± 10% ± 5%	C3216C0G2J331K060AA C3216C0G2J331J060AA			
390 pF	1005	0.50 ± 0.05	± 10% ± 5%				C1005C0G2A391K050BA C1005C0G2A391J050BA
	1608	0.80 ± 0.10	± 10% ± 5%			C1608C0G2E391K080AA C1608C0G2E391J080AA	C1608C0G2A391K080AA C1608C0G2A391J080AA
	2012	0.60 ± 0.15	± 10% ± 5%		C2012C0G2W391K060AA C2012C0G2W391J060AA		
	3216	0.60 ± 0.15	± 10% ± 5%	C3216C0G2J391K060AA C3216C0G2J391J060AA			
470 pF	1005	0.50 ± 0.05	± 10% ± 5%				C1005C0G2A471K050BA C1005C0G2A471J050BA
	1608	0.80 ± 0.10	± 10% ± 5%			C1608C0G2E471K080AA C1608C0G2E471J080AA	C1608C0G2A471K080AA C1608C0G2A471J080AA
	2012	0.60 ± 0.15	± 10% ± 5%		C2012C0G2W471K060AA C2012C0G2W471J060AA		
	3216	0.85 ± 0.15	± 10% ± 5%	C3216C0G2J471K085AA C3216C0G2J471J085AA			
560 pF	1608	0.80 ± 0.10	± 10% ± 5%			C1608C0G2E561K080AA C1608C0G2E561J080AA	C1608C0G2A561K080AA C1608C0G2A561J080AA
	2012	0.60 ± 0.15	± 10% ± 5%		C2012C0G2W561K060AA C2012C0G2W561J060AA		
	3216	0.85 ± 0.15	± 10% ± 5%	C3216C0G2J561K085AA C3216C0G2J561J085AA			
680 pF	1608	0.80 ± 0.10	± 10% ± 5%			C1608C0G2E681K080AA C1608C0G2E681J080AA	C1608C0G2A681K080AA C1608C0G2A681J080AA
	2012	0.60 ± 0.15	± 10% ± 5%		C2012C0G2W681K060AA C2012C0G2W681J060AA		
	3216	0.85 ± 0.15	± 10% ± 5%	C3216C0G2J681K085AA C3216C0G2J681J085AA			
820 pF	1608	0.80 ± 0.10	± 10% ± 5%			C1608C0G2E821K080AA C1608C0G2E821J080AA	C1608C0G2A821K080AA C1608C0G2A821J080AA
	2012	0.60 ± 0.15	± 10% ± 5%		C2012C0G2W821K060AA C2012C0G2W821J060AA	C2012C0G2E821K060AA C2012C0G2E821J060AA	
	3216	0.85 ± 0.15	± 10% ± 5%	C3216C0G2J821K085AA C3216C0G2J821J085AA			



电容 范围表

种类 1 (温度补偿用)

温度特性: C0G (-55 ~ +125°C、0 ± 30 ppm/°C)

电容	尺寸	厚度 (mm)	电容容差	目录型号 额定电压 Edc : 630V	额定电压 Edc : 450V	额定电压 Edc : 250V	额定电压 Edc : 100V
1 nF	1608	0.80 ± 0.10	± 10%			C1608C0G2E102K080AA	C1608C0G2A102K080AA
			± 5%			C1608C0G2E102J080AA	C1608C0G2A102J080AA
			± 2%				C1608C0G2A102G080AA
			± 1%				C1608C0G2A102F080AA
	2012	0.60 ± 0.15	± 10%		C2012C0G2W102K060AA		
			± 5%		C2012C0G2W102J060AA		C2012C0G2A102J060AA
		0.85 ± 0.15	± 10%			C2012C0G2E102K085AA	
			± 5%			C2012C0G2E102J085AA	
	3216	0.85 ± 0.15	± 10%	C3216C0G2J102K085AA			
			± 5%	C3216C0G2J102J085AA			
1.2 nF	1608	0.80 ± 0.10	± 10%			C1608C0G2E122K080AA	C1608C0G2A122K080AA
			± 5%			C1608C0G2E122J080AA	C1608C0G2A122J080AA
	2012	0.60 ± 0.15	± 10%		C2012C0G2W122K060AA		
			± 5%		C2012C0G2W122J060AA		C2012C0G2A122J060AA
		0.85 ± 0.15	± 10%			C2012C0G2E122K085AA	
			± 5%			C2012C0G2E122J085AA	
	3216	0.85 ± 0.15	± 10%	C3216C0G2J122K085AA			
			± 5%	C3216C0G2J122J085AA			
1.5 nF	1608	0.80 ± 0.10	± 10%			C1608C0G2E152K080AA	C1608C0G2A152K080AA
			± 5%			C1608C0G2E152J080AA	C1608C0G2A152J080AA
	2012	0.60 ± 0.15	± 10%		C2012C0G2W152K085AA		
			± 5%		C2012C0G2W152J085AA		C2012C0G2A152J085AA
		0.85 ± 0.15	± 10%			C2012C0G2E152K085AA	
			± 5%			C2012C0G2E152J085AA	
	3216	1.15 ± 0.15	± 10%	C3216C0G2J152K115AA			
			± 5%	C3216C0G2J152J115AA			
1.8 nF	1608	0.80 ± 0.10	± 10%			C1608C0G2E182K080AA	C1608C0G2A182K080AA
			± 5%			C1608C0G2E182J080AA	C1608C0G2A182J080AA
	2012	0.85 ± 0.15	± 10%		C2012C0G2W182K085AA		C2012C0G2A182K085AA
			± 5%		C2012C0G2W182J085AA		C2012C0G2A182J085AA
		1.25 ± 0.20	± 10%			C2012C0G2E182K125AA	
			± 5%			C2012C0G2E182J125AA	
	3216	1.15 ± 0.15	± 10%	C3216C0G2J182K115AA			
			± 5%	C3216C0G2J182J115AA			
2.2 nF	1608	0.80 ± 0.10	± 10%				C1608C0G2A222K080AA
			± 5%				C1608C0G2A222J080AA
	2012	0.85 ± 0.15	± 10%		C2012C0G2W222K085AA		C2012C0G2A222K085AA
			± 5%		C2012C0G2W222J085AA		C2012C0G2A222J085AA
		1.25 ± 0.20	± 10%			C2012C0G2E222K125AA	
			± 5%			C2012C0G2E222J125AA	
	3216	1.15 ± 0.15	± 10%	C3216C0G2J222K115AA			
			± 5%	C3216C0G2J222J115AA			
2.7 nF	1608	0.80 ± 0.15/-0.1	± 10%				C1608C0G2A272K080AA
			± 5%				C1608C0G2A272J080AA
	2012	1.25 ± 0.20	± 10%		C2012C0G2W272K125AA	C2012C0G2E272K125AA	C2012C0G2A272K125AA
			± 5%		C2012C0G2W272J125AA	C2012C0G2E272J125AA	C2012C0G2A272J125AA
		1.60 ± 0.20	± 10%	C3216C0G2J272K160AA			
			± 5%	C3216C0G2J272J160AA			
	3216	1.60 ± 0.20	± 10%				
			± 5%				
3.3 nF	1608	0.80 ± 0.15/-0.1	± 10%				C1608C0G2A332K080AA
			± 5%				C1608C0G2A332J080AA
	2012	0.85 ± 0.15	± 10%			C2012C0G2E332K085AA	
			± 5%			C2012C0G2E332J085AA	
		1.25 ± 0.20	± 10%		C2012C0G2W332K125AA		C2012C0G2A332K125AA
			± 5%		C2012C0G2W332J125AA		C2012C0G2A332J125AA
	3216	1.60 ± 0.20	± 10%			C3216C0G2E332K085AA	
			± 5%			C3216C0G2E332J085AA	



电容 范围表

种类 1 (温度补偿用)

温度特性: C0G (-55 ~ +125°C、0 ± 30 ppm/°C)

电容	尺寸	厚度 (mm)	电容容差	目录型号	额定电压 E _{dc} : 630V	额定电压 E _{dc} : 450V	额定电压 E _{dc} : 250V	额定电压 E _{dc} : 100V
3.9 nF	2012	1.25 ± 0.20	± 10%			C2012C0G2W392K125AA	C2012C0G2E392K125AA	C2012C0G2A392K125AA
			± 5%			C2012C0G2W392J125AA	C2012C0G2E392J125AA	C2012C0G2A392J125AA
		0.60 ± 0.15	± 10%					C3216C0G2A392K060AA
			± 5%					C3216C0G2A392J060AA
	3216	0.85 ± 0.15	± 10%	C3216C0G2J392K085AA				
			± 5%	C3216C0G2J392J085AA				
		1.15 ± 0.15	± 10%			C3216C0G2E392K115AA		
			± 5%			C3216C0G2E392J115AA		
	3225	1.25 ± 0.20	± 10%	C3225C0G2J392K125AA				
			± 5%	C3225C0G2J392J125AA				
4.7 nF	2012	1.25 ± 0.20	± 10%		C2012C0G2W472K125AA	C2012C0G2E472K125AA	C2012C0G2A472K125AA	
			± 5%		C2012C0G2W472J125AA	C2012C0G2E472J125AA	C2012C0G2A472J125AA	
		0.85 ± 0.15	± 10%	C3216C0G2J472K085AA				C3216C0G2A472K085AA
			± 5%	C3216C0G2J472J085AA				C3216C0G2A472J085AA
	3216	1.15 ± 0.15	± 10%			C3216C0G2E472K115AA		
			± 5%			C3216C0G2E472J115AA		
		1.60 ± 0.20	± 10%	C3225C0G2J472K160AA				
			± 5%	C3225C0G2J472J160AA				
	3225	1.60 ± 0.20	± 10%		C2012C0G2W562K125AA	C2012C0G2E562K125AA	C2012C0G2A562K125AA	
			± 5%		C2012C0G2W562J125AA	C2012C0G2E562J125AA	C2012C0G2A562J125AA	
5.6 nF	2012	1.25 ± 0.20	± 10%			C2012C0G2E562K125AA		
			± 5%			C2012C0G2E562J125AA		
		0.85 ± 0.15	± 10%					C3216C0G2A562K085AA
			± 5%					C3216C0G2A562J085AA
	3216	1.15 ± 0.15	± 10%	C3216C0G2J562K115AA		C3216C0G2E562K115AA		
			± 5%	C3216C0G2J562J115AA		C3216C0G2E562J115AA		
		1.60 ± 0.20	± 10%	C3225C0G2J562K160AA				
			± 5%	C3225C0G2J562J160AA				
	3225	1.60 ± 0.20	± 10%					
			± 5%					
6.8 nF	2012	1.25 ± 0.20	± 10%			C2012C0G2E682K125AA	C2012C0G2A682K125AA	
			± 5%			C2012C0G2E682J125AA	C2012C0G2A682J125AA	
		1.15 ± 0.15	± 10%	C3216C0G2J682K115AA	C3216C0G2W682K115AA			C3216C0G2A682K115AA
			± 5%	C3216C0G2J682J115AA	C3216C0G2W682J115AA			C3216C0G2A682J115AA
	3216	1.60 ± 0.20	± 10%			C3216C0G2E682K160AA		
			± 5%			C3216C0G2E682J160AA		
		2.00 ± 0.20	± 10%	C3225C0G2J682K200AA				
			± 5%	C3225C0G2J682J200AA				
	3225	2.00 ± 0.20	± 10%					
			± 5%					
8.2 nF	2012	1.25 ± 0.20	± 10%			C2012C0G2E822K125AA	C2012C0G2A822K125AA	
			± 5%			C2012C0G2E822J125AA	C2012C0G2A822J125AA	
		1.15 ± 0.15	± 10%		C3216C0G2W822K115AA			C3216C0G2A822K115AA
			± 5%		C3216C0G2W822J115AA			C3216C0G2A822J115AA
	3216	1.60 ± 0.20	± 10%	C3216C0G2J822K160AA		C3216C0G2E822K160AA		
			± 5%	C3216C0G2J822J160AA		C3216C0G2E822J160AA		
		1.25 ± 0.20	± 10%	C3225C0G2J822K125AA				
			± 5%	C3225C0G2J822J125AA				
	4532	1.60 ± 0.20	± 10%	C4532C0G2J822K160KA				
			± 5%	C4532C0G2J822J160KA				
10 nF	2012	1.25 ± 0.20	± 10%			C2012C0G2E103K125AA	C2012C0G2A103K125AA	
			± 5%			C2012C0G2E103J125AA	C2012C0G2A103J125AA	
		1.15 ± 0.15	± 10%			C3216C0G2E103K115AA	C3216C0G2A103K115AA	
			± 5%			C3216C0G2E103J115AA	C3216C0G2A103J115AA	
	3216	1.60 ± 0.20	± 10%	C3216C0G2J103K160AA	C3216C0G2W103K160AA			
			± 5%	C3216C0G2J103J160AA	C3216C0G2W103J160AA			
		1.25 ± 0.20	± 10%	C3225C0G2J103K125AA				
			± 5%	C3225C0G2J103J125AA				
	3225	1.60 ± 0.20	± 10%			C3225C0G2E103K160AA		
			± 5%			C3225C0G2E103J160AA		
15 nF	2012	1.25 ± 0.20	± 10%					
			± 5%					
		1.15 ± 0.15	± 10%					C3216C0G2A153K115AA
			± 5%					C3216C0G2A153J115AA
	3216	1.60 ± 0.20	± 10%			C3216C0G2E153K160AA		
			± 5%			C3216C0G2E153J160AA		
		1.60 ± 0.3/-0.1	± 10%		C3216C0G2W153K160AA			
			± 5%		C3216C0G2W153J160AA			
	4532	1.60 ± 0.20	± 10%					
			± 5%					



电容 范围表

种类 1 (温度补偿用)

温度特性: C0G (-55 ~ +125°C、0 ± 30 ppm/°C)

电容	尺寸	厚度 (mm)	电容容差	目录型号 额定电压 Edc : 630V	额定电压 Edc : 450V	额定电压 Edc : 250V	额定电压 Edc : 100V
15 nF	3225	1.25 ± 0.20	± 10%				C3225C0G2A153K125AA
			± 5%				C3225C0G2A153J125AA
		1.60 ± 0.20	± 10%	C3225C0G2J153K160AA			
			± 5%	C3225C0G2J153J160AA			
	4532	2.00 ± 0.20	± 10%			C3225C0G2E153K200AA	
			± 5%			C3225C0G2E153J200AA	
22 nF	3216	1.60 ± 0.20	± 10%				C3216C0G2A223K160AA
			± 5%				C3216C0G2A223J160AA
		1.60 +0.3/-0.1	± 10%			C3216C0G2E223K160AA	
			± 5%			C3216C0G2E223J160AA	
	3225	1.60 ± 0.20	± 10%			C3225C0G2E223K160AA	C3225C0G2A223K160AA
			± 5%			C3225C0G2E223J160AA	C3225C0G2A223J160AA
		2.30 ± 0.20	± 10%	C3225C0G2J223K230AA	C3225C0G2W223K230AA		
			± 5%	C3225C0G2J223J230AA	C3225C0G2W223J230AA		
	4532	1.60 ± 0.20	± 10%			C4532C0G2E223K160KA	
			± 5%			C4532C0G2E223J160KA	
		3.20 ± 0.30	± 10%	C4532C0G2J223K320KA			
			± 5%	C4532C0G2J223J320KA			
33 nF	3216	1.60 +0.3/-0.1	± 10%				C3216C0G2A333K160AA
			± 5%				C3216C0G2A333J160AA
		2.00 ± 0.20	± 10%				C3225C0G2A333K200AA
			± 5%				C3225C0G2A333J200AA
	3225	2.30 ± 0.20	± 10%			C3225C0G2E333K230AA	
			± 5%			C3225C0G2E333J230AA	
		2.50 ± 0.30	± 10%	C3225C0G2J333K250AA	C3225C0G2W333K250AA		
			± 5%	C3225C0G2J333J250AA	C3225C0G2W333J250AA		
	4532	2.00 ± 0.20	± 10%	C4532C0G2J333K200KA		C4532C0G2E333K200KA	
			± 5%	C4532C0G2J333J200KA		C4532C0G2E333J200KA	
47 nF	3225	2.30 ± 0.20	± 10%				C3225C0G2A473K230AA
			± 5%				C3225C0G2A473J230AA
		2.50 ± 0.30	± 10%			C3225C0G2E473K250AA	
			± 5%			C3225C0G2E473J250AA	
	4532	2.00 ± 0.20	± 10%				C4532C0G2A473K200KA
			± 5%				C4532C0G2A473J200KA
		2.30 ± 0.20	± 10%		C4532C0G2W473K230KA		
			± 5%		C4532C0G2W473J230KA		
	4532	3.20 ± 0.30	± 10%	C4532C0G2J473K320KA		C4532C0G2E473K320KA	
			± 5%	C4532C0G2J473J320KA		C4532C0G2E473J320KA	
68 nF	3225	2.30 ± 0.20	± 10%				C3225C0G2A683K230AA
			± 5%				C3225C0G2A683J230AA
		2.30 ± 0.20	± 10%			C4532C0G2E683K230KN	
			± 5%			C4532C0G2E683J230KN	
	4532	2.50 ± 0.30	± 10%				C4532C0G2A683K250KA
			± 5%				C4532C0G2A683J250KA
		3.20 ± 0.30	± 10%		C4532C0G2W683K320KA		
			± 5%		C4532C0G2W683J320KA		
	5750	2.30 ± 0.20	± 10%	C5750C0G2J683K230KC			
			± 5%	C5750C0G2J683J230KC			
100 nF	4532	3.20 ± 0.30	± 10%			C4532C0G2E104K320KN	C4532C0G2A104K320KA
			± 5%			C4532C0G2E104J320KN	C4532C0G2A104J320KA
	5750	2.80 ± 0.30	± 10%	C5750C0G2J104K280KC	C5750C0G2W104J280KA		
			± 5%	C5750C0G2J104J280KC	C5750C0G2W104K280KA		
150 nF	5750	2.30 ± 0.20	± 10%			C5750C0G2E154K230KN	C5750C0G2A154K230KA
			± 5%			C5750C0G2E154J230KN	C5750C0G2A154J230KA



种类 1 (温度补偿用)

温度特性: CH (-25 ~ +85℃、0 ± 60 ppm/℃)

电容	尺寸	厚度 (mm)	电容容差	目录型号			
				额定电压 Edc : 630V	额定电压 Edc : 450V	额定电压 Edc : 250V	额定电压 Edc : 100V
1 pF	1608	0.80 ± 0.10	± 0.25pF				C1608CH2A010C080AA
1.5 pF	1608	0.80 ± 0.10	± 0.25pF				C1608CH2A1R5C080AA
2 pF	1608	0.80 ± 0.10	± 0.25pF				C1608CH2A020C080AA
2.2 pF	1608	0.80 ± 0.10	± 0.25pF				C1608CH2A2R2C080AA
3 pF	1608	0.80 ± 0.10	± 0.25pF				C1608CH2A030C080AA
3.3 pF	1608	0.80 ± 0.10	± 0.25pF				C1608CH2A3R3C080AA
4 pF	1608	0.80 ± 0.10	± 0.25pF				C1608CH2A040C080AA
4.7 pF	1608	0.80 ± 0.10	± 0.25pF				C1608CH2A4R7C080AA
5 pF	1608	0.80 ± 0.10	± 0.25pF				C1608CH2A050C080AA
6 pF	1608	0.80 ± 0.10	± 0.50pF				C1608CH2A060D080AA
6.8 pF	1608	0.80 ± 0.10	± 0.50pF				C1608CH2A6R8D080AA
7 pF	1608	0.80 ± 0.10	± 0.50pF				C1608CH2A070D080AA
8 pF	1608	0.80 ± 0.10	± 0.50pF				C1608CH2A080D080AA
9 pF	1608	0.80 ± 0.10	± 0.50pF				C1608CH2A090D080AA
10 pF	1608	0.80 ± 0.10	± 0.50pF				C1608CH2A100D080AA
12 pF	1608	0.80 ± 0.10	± 5%				C1608CH2A120J080AA
15 pF	1608	0.80 ± 0.10	± 5%				C1608CH2A150J080AA
18 pF	1608	0.80 ± 0.10	± 5%				C1608CH2A180J080AA
22 pF	1608	0.80 ± 0.10	± 5%				C1608CH2A220J080AA
27 pF	1608	0.80 ± 0.10	± 5%				C1608CH2A270J080AA
33 pF	1608	0.80 ± 0.10	± 5%				C1608CH2A330J080AA
39 pF	1608	0.80 ± 0.10	± 5%				C1608CH2A390J080AA
47 pF	1608	0.80 ± 0.10	± 5%				C1608CH2A470J080AA
56 pF	1608	0.80 ± 0.10	± 5%				C1608CH2A560J080AA
68 pF	1608	0.80 ± 0.10	± 5%				C1608CH2A680J080AA
82 pF	1608	0.80 ± 0.10	± 5%				C1608CH2A820J080AA
100 pF	1005	0.50 ± 0.05	± 10%				C1005CH2A101K050BA
			± 5%				C1005CH2A101J050BA
	1608	0.80 ± 0.10	± 10%			C1608CH2E101K080AA	C1608CH2A101K080AA
			± 5%			C1608CH2E101J080AA	C1608CH2A101J080AA
	2012	0.60 ± 0.15	± 10%		C2012CH2W101K060AA		
			± 5%		C2012CH2W101J060AA		
120 pF	3216	0.60 ± 0.15	± 10%	C3216CH2J101K060AA			
			± 5%	C3216CH2J101J060AA			
	1005	0.50 ± 0.05	± 10%				C1005CH2A121K050BA
			± 5%				C1005CH2A121J050BA
	1608	0.80 ± 0.10	± 10%			C1608CH2E121K080AA	C1608CH2A121K080AA
			± 5%			C1608CH2E121J080AA	C1608CH2A121J080AA
120 pF	2012	0.60 ± 0.15	± 10%		C2012CH2W121K060AA		
			± 5%		C2012CH2W121J060AA		
	3216	0.60 ± 0.15	± 10%	C3216CH2J121K060AA			
			± 5%	C3216CH2J121J060AA			
	1005	0.50 ± 0.05	± 10%				C1005CH2A151K050BA
			± 5%				C1005CH2A151J050BA
150 pF	1608	0.80 ± 0.10	± 10%			C1608CH2E151K080AA	C1608CH2A151K080AA
			± 5%			C1608CH2E151J080AA	C1608CH2A151J080AA
	2012	0.60 ± 0.15	± 10%		C2012CH2W151K060AA		
			± 5%		C2012CH2W151J060AA		
	3216	0.60 ± 0.15	± 10%	C3216CH2J151K060AA			
			± 5%	C3216CH2J151J060AA			
180 pF	1005	0.50 ± 0.05	± 10%				C1005CH2A181K050BA
			± 5%				C1005CH2A181J050BA
	1608	0.80 ± 0.10	± 10%			C1608CH2E181K080AA	C1608CH2A181K080AA
			± 5%			C1608CH2E181J080AA	C1608CH2A181J080AA
	2012	0.60 ± 0.15	± 10%		C2012CH2W181K060AA		
			± 5%		C2012CH2W181J060AA		
220 pF	3216	0.60 ± 0.15	± 10%	C3216CH2J181K060AA			
			± 5%	C3216CH2J181J060AA			
	1005	0.50 ± 0.05	± 10%				C1005CH2A221K050BA
			± 5%				C1005CH2A221J050BA
	1608	0.80 ± 0.10	± 10%			C1608CH2E221K080AA	C1608CH2A221K080AA
			± 5%			C1608CH2E221J080AA	C1608CH2A221J080AA



电容 范围表

种类 1 (温度补偿用)

温度特性: CH (-25 ~ +85℃、0 ± 60 ppm/℃)

电容	尺寸	厚度 (mm)	电容容差	目录型号			
				额定电压 Edc : 630V	额定电压 Edc : 450V	额定电压 Edc : 250V	额定电压 Edc : 100V
220 pF	2012	0.60 ± 0.15	± 10%		C2012CH2W221K060AA		
			± 5%		C2012CH2W221J060AA		
	3216	0.60 ± 0.15	± 10%	C3216CH2J221K060AA			
			± 5%	C3216CH2J221J060AA			
270 pF	1005	0.50 ± 0.05	± 10%				C1005CH2A271K050BA
			± 5%				C1005CH2A271J050BA
	1608	0.80 ± 0.10	± 10%			C1608CH2E271K080AA	C1608CH2A271K080AA
			± 5%			C1608CH2E271J080AA	C1608CH2A271J080AA
	2012	0.60 ± 0.15	± 10%		C2012CH2W271K060AA		
			± 5%		C2012CH2W271J060AA		
	3216	0.60 ± 0.15	± 10%	C3216CH2J271K060AA			
			± 5%	C3216CH2J271J060AA			
330 pF	1005	0.50 ± 0.05	± 10%				C1005CH2A331K050BA
			± 5%				C1005CH2A331J050BA
	1608	0.80 ± 0.10	± 10%			C1608CH2E331K080AA	C1608CH2A331K080AA
			± 5%			C1608CH2E331J080AA	C1608CH2A331J080AA
	2012	0.60 ± 0.15	± 10%		C2012CH2W331K060AA		
			± 5%		C2012CH2W331J060AA		
	3216	0.60 ± 0.15	± 10%	C3216CH2J331K060AA			
			± 5%	C3216CH2J331J060AA			
390 pF	1005	0.50 ± 0.05	± 10%				C1005CH2A391K050BA
			± 5%				C1005CH2A391J050BA
	1608	0.80 ± 0.10	± 10%			C1608CH2E391K080AA	C1608CH2A391K080AA
			± 5%			C1608CH2E391J080AA	C1608CH2A391J080AA
	2012	0.60 ± 0.15	± 10%		C2012CH2W391K060AA		
			± 5%		C2012CH2W391J060AA		
	3216	0.60 ± 0.15	± 10%	C3216CH2J391K060AA			
			± 5%	C3216CH2J391J060AA			
470 pF	1005	0.50 ± 0.05	± 10%				C1005CH2A471K050BA
			± 5%				C1005CH2A471J050BA
	1608	0.80 ± 0.10	± 10%			C1608CH2E471K080AA	C1608CH2A471K080AA
			± 5%			C1608CH2E471J080AA	C1608CH2A471J080AA
	2012	0.60 ± 0.15	± 10%		C2012CH2W471K060AA		
			± 5%		C2012CH2W471J060AA		
	3216	0.85 ± 0.15	± 10%	C3216CH2J471K085AA			
			± 5%	C3216CH2J471J085AA			
560 pF	1608	0.80 ± 0.10	± 10%			C1608CH2E561K080AA	C1608CH2A561K080AA
			± 5%			C1608CH2E561J080AA	C1608CH2A561J080AA
	2012	0.60 ± 0.15	± 10%		C2012CH2W561K060AA		
			± 5%		C2012CH2W561J060AA		
	3216	0.85 ± 0.15	± 10%	C3216CH2J561K085AA			
			± 5%	C3216CH2J561J085AA			
	1608	0.80 ± 0.10	± 10%			C1608CH2E681K080AA	C1608CH2A681K080AA
			± 5%			C1608CH2E681J080AA	C1608CH2A681J080AA
680 pF	2012	0.60 ± 0.15	± 10%		C2012CH2W681K060AA		
			± 5%		C2012CH2W681J060AA		
	3216	0.85 ± 0.15	± 10%	C3216CH2J681K085AA			
			± 5%	C3216CH2J681J085AA			
	1608	0.80 ± 0.10	± 10%			C1608CH2E821K080AA	C1608CH2A821K080AA
			± 5%			C1608CH2E821J080AA	C1608CH2A821J080AA
	2012	0.60 ± 0.15	± 10%		C2012CH2W821K060AA	C2012CH2E821K060AA	
			± 5%		C2012CH2W821J060AA	C2012CH2E821J060AA	
820 pF	3216	0.85 ± 0.15	± 10%	C3216CH2J821K085AA			
			± 5%	C3216CH2J821J085AA			
	1608	0.80 ± 0.10	± 10%			C1608CH2E102K080AA	C1608CH2A102K080AA
			± 5%			C1608CH2E102J080AA	C1608CH2A102J080AA
	2012	0.60 ± 0.15	± 10%		C2012CH2W102K060AA		C2012CH2A102J060AA
			± 5%		C2012CH2W102J060AA		
	3216	0.85 ± 0.15	± 10%	C3216CH2J102K085AA		C2012CH2E102K085AA	
			± 5%	C3216CH2J102J085AA		C2012CH2E102J085AA	



电容 范围表

种类 1 (温度补偿用)

温度特性: CH (-25 ~ +85℃、0 ± 60 ppm/℃)

电容	尺寸	厚度 (mm)	电容容差	目录型号			
				额定电压 Edc : 630V	额定电压 Edc : 450V	额定电压 Edc : 250V	额定电压 Edc : 100V
1.2 nF	1608	0.80 ± 0.10	± 10%			C1608CH2E122K080AA	C1608CH2A122K080AA
			± 5%			C1608CH2E122J080AA	C1608CH2A122J080AA
	2012	0.60 ± 0.15	± 10%		C2012CH2W122K060AA		
			± 5%		C2012CH2W122J060AA		C2012CH2A122J060AA
	3216	0.85 ± 0.15	± 10%	C3216CH2J122K085AA		C2012CH2E122K085AA	
			± 5%	C3216CH2J122J085AA		C2012CH2E122J085AA	
1.5 nF	1608	0.80 ± 0.10	± 10%			C1608CH2E152K080AA	C1608CH2A152K080AA
			± 5%			C1608CH2E152J080AA	C1608CH2A152J080AA
	2012	0.60 ± 0.15	± 10%				C2012CH2A152K060AA
			± 5%				C2012CH2A152J060AA
	3216	1.15 ± 0.15	± 10%	C3216CH2J152K115AA	C2012CH2W152K085AA	C2012CH2E152K085AA	
			± 5%	C3216CH2J152J115AA	C2012CH2W152J085AA	C2012CH2E152J085AA	
1.8 nF	1608	0.80 ± 0.10	± 10%			C1608CH2E182K080AA	C1608CH2A182K080AA
			± 5%			C1608CH2E182J080AA	C1608CH2A182J080AA
	2012	0.85 ± 0.15	± 10%		C2012CH2W182K085AA		C2012CH2A182K085AA
			± 5%		C2012CH2W182J085AA		C2012CH2A182J085AA
	3216	1.15 ± 0.15	± 10%	C3216CH2J182K115AA		C2012CH2E182K125AA	
			± 5%	C3216CH2J182J115AA		C2012CH2E182J125AA	
2.2 nF	1608	0.80 ± 0.10	± 10%				C1608CH2A222K080AA
			± 5%				C1608CH2A222J080AA
	2012	0.80 ± 0.15/-0.1	± 10%			C1608CH2E222K080AA	
			± 5%			C1608CH2E222J080AA	
	3216	1.15 ± 0.15	± 10%	C3216CH2J222K115AA	C2012CH2W222K085AA		C2012CH2A222K085AA
			± 5%	C3216CH2J222J115AA	C2012CH2W222J085AA		C2012CH2A222J085AA
2.7 nF	1608	0.80 ± 0.15/-0.1	± 10%				C1608CH2A272K080AA
			± 5%				C1608CH2A272J080AA
	2012	1.25 ± 0.20	± 10%		C2012CH2W272K125AA	C2012CH2E272K125AA	C2012CH2A272K125AA
			± 5%		C2012CH2W272J125AA	C2012CH2E272J125AA	C2012CH2A272J125AA
	3216	1.60 ± 0.20	± 10%	C3216CH2J272K160AA			
			± 5%	C3216CH2J272J160AA			
3.3 nF	1608	0.80 ± 0.15/-0.1	± 10%				C1608CH2A332K080AA
			± 5%				C1608CH2A332J080AA
	2012	0.85 ± 0.15	± 10%			C2012CH2E332K085AA	
			± 5%			C2012CH2E332J085AA	
	3216	1.60 ± 0.20	± 10%	C3216CH2J332K160AA	C2012CH2W332K125AA		C2012CH2A332K125AA
			± 5%	C3216CH2J332J160AA	C2012CH2W332J125AA		C2012CH2A332J125AA
3.9 nF	2012	1.25 ± 0.20	± 10%		C2012CH2W392K125AA	C2012CH2E392K125AA	C2012CH2A392K125AA
			± 5%		C2012CH2W392J125AA	C2012CH2E392J125AA	C2012CH2A392J125AA
	3216	0.85 ± 0.15	± 10%	C3216CH2J392K085AA			C3216CH2A392K060AA
			± 5%	C3216CH2J392J085AA			C3216CH2A392J060AA
	3225	1.25 ± 0.20	± 10%			C3216CH2E392K115AA	
			± 5%			C3216CH2E392J115AA	
4.7 nF	2012	1.25 ± 0.20	± 10%		C2012CH2W472K125AA	C2012CH2E472K125AA	C2012CH2A472K125AA
			± 5%		C2012CH2W472J125AA	C2012CH2E472J125AA	C2012CH2A472J125AA



电容 范围表

种类 1 (温度补偿用)

温度特性: CH (-25 ~ +85℃、0 ± 60 ppm/℃)

电容	尺寸	厚度 (mm)	电容容差	目录型号			
				额定电压 Edc : 630V	额定电压 Edc : 450V	额定电压 Edc : 250V	额定电压 Edc : 100V
4.7 nF	3216	0.85 ± 0.15	± 10%	C3216CH2J472K085AA			C3216CH2A472K085AA
			± 5%	C3216CH2J472J085AA			C3216CH2A472J085AA
		1.15 ± 0.15	± 10%			C3216CH2E472K115AA	
			± 5%			C3216CH2E472J115AA	
	3225	1.60 ± 0.20	± 10%	C3225CH2J472K160AA			
			± 5%	C3225CH2J472J160AA			
5.6 nF	2012	1.25 ± 0.20	± 10%		C2012CH2W562K125AA	C2012CH2E562K125AA	C2012CH2A562K125AA
			± 5%		C2012CH2W562J125AA	C2012CH2E562J125AA	C2012CH2A562J125AA
	3216	0.85 ± 0.15	± 10%				C3216CH2A562K085AA
			± 5%				C3216CH2A562J085AA
		1.15 ± 0.15	± 10%	C3216CH2J562K115AA		C3216CH2E562K115AA	
			± 5%	C3216CH2J562J115AA		C3216CH2E562J115AA	
	3225	1.60 ± 0.20	± 10%	C3225CH2J562K160AA			
			± 5%	C3225CH2J562J160AA			
	3216	1.25 ± 0.20	± 10%			C2012CH2E682K125AA	C2012CH2A682K125AA
			± 5%			C2012CH2E682J125AA	C2012CH2A682J125AA
6.8 nF	3216	1.15 ± 0.15	± 10%	C3216CH2J682K115AA	C3216CH2W682K115AA		C3216CH2A682K115AA
			± 5%	C3216CH2J682J115AA	C3216CH2W682J115AA		C3216CH2A682J115AA
		1.60 ± 0.20	± 10%			C3216CH2E682K160AA	
			± 5%			C3216CH2E682J160AA	
	3225	2.00 ± 0.20	± 10%	C3225CH2J682K200AA			
			± 5%	C3225CH2J682J200AA			
	2012	1.25 ± 0.20	± 10%			C2012CH2E822K125AA	C2012CH2A822K125AA
			± 5%			C2012CH2E822J125AA	C2012CH2A822J125AA
		1.15 ± 0.15	± 10%		C3216CH2W822K115AA		C3216CH2A822K115AA
			± 5%		C3216CH2W822J115AA		C3216CH2A822J115AA
8.2 nF	3216	1.60 ± 0.20	± 10%	C3216CH2J822K160AA		C3216CH2E822K160AA	
			± 5%	C3216CH2J822J160AA		C3216CH2E822J160AA	
	3225	1.25 ± 0.20	± 10%	C3225CH2J822K125AA			
			± 5%	C3225CH2J822J125AA			
	4532	1.60 ± 0.20	± 10%	C4532CH2J822K160KA			
			± 5%	C4532CH2J822J160KA			
	2012	1.25 ± 0.20	± 10%			C2012CH2E103K125AA	C2012CH2A103K125AA
			± 5%			C2012CH2E103J125AA	C2012CH2A103J125AA
		1.15 ± 0.15	± 10%			C3216CH2E103K115AA	C3216CH2A103K115AA
			± 5%			C3216CH2E103J115AA	C3216CH2A103J115AA
10 nF	3216	1.60 ± 0.20	± 10%	C3216CH2J103K160AA	C3216CH2W103K160AA		
			± 5%	C3216CH2J103J160AA	C3216CH2W103J160AA		
	3225	1.25 ± 0.20	± 10%	C3225CH2J103K125AA			
			± 5%	C3225CH2J103J125AA			
	4532	1.60 ± 0.20	± 10%	C4532CH2J103K160KA			
			± 5%	C4532CH2J103J160KA			
	3216	1.15 ± 0.15	± 10%				C3216CH2A153K115AA
			± 5%				C3216CH2A153J115AA
		1.60 ± 0.20	± 10%			C3216CH2E153K160AA	
			± 5%			C3216CH2E153J160AA	
15 nF	3216	1.60 ± 0.20	± 10%		C3216CH2W153K160AA		
			± 5%		C3216CH2W153J160AA		
	3225	1.25 ± 0.20	± 10%				C3225CH2A153K125AA
			± 5%				C3225CH2A153J125AA
	4532	2.50 ± 0.30	± 10%	C4532CH2J153K250KA			
			± 5%	C4532CH2J153J250KA			
	3216	1.60 ± 0.20	± 10%				C3216CH2A223K160AA
			± 5%				C3216CH2A223J160AA
		1.60 ± 0.3/-0.1	± 10%			C3216CH2E223K160AA	
			± 5%			C3216CH2E223J160AA	



电容 范围表

种类 1 (温度补偿用)

温度特性: CH (-25 ~ +85°C、0 ± 60 ppm/°C)

电容	尺寸	厚度 (mm)	电容容差	目录型号			
				额定电压 Edc : 630V	额定电压 Edc : 450V	额定电压 Edc : 250V	额定电压 Edc : 100V
22 nF	3225	1.60 ± 0.20	± 10%			C3225CH2E223K160AA	C3225CH2A223K160AA
			± 5%			C3225CH2E223J160AA	C3225CH2A223J160AA
		2.30 ± 0.20	± 10%	C3225CH2J223K230AA	C3225CH2W223K230AA		
			± 5%	C3225CH2J223J230AA	C3225CH2W223J230AA		
	4532	1.60 ± 0.20	± 10%			C4532CH2E223K160KA	
			± 5%			C4532CH2E223J160KA	
33 nF	3216	1.60 +0.3/-0.1	± 10%				C3216CH2A333K160AA
			± 5%				C3216CH2A333J160AA
		2.00 ± 0.20	± 10%				C3225CH2A333K200AA
			± 5%				C3225CH2A333J200AA
	3225	2.30 ± 0.20	± 10%			C3225CH2E333K230AA	
			± 5%			C3225CH2E333J230AA	
		2.50 ± 0.30	± 10%	C3225CH2J333K250AA	C3225CH2W333K250AA		
			± 5%	C3225CH2J333J250AA	C3225CH2W333J250AA		
	4532	2.00 ± 0.20	± 10%			C4532CH2E333K200KA	
			± 5%			C4532CH2E333J200KA	
47 nF	3225	2.30 ± 0.20	± 10%				C3225CH2A473K230AA
			± 5%				C3225CH2A473J230AA
		2.50 ± 0.30	± 10%			C3225CH2E473K250AA	
			± 5%			C3225CH2E473J250AA	
	4532	2.00 ± 0.20	± 10%				C4532CH2A473K200KA
			± 5%				C4532CH2A473J200KA
		2.30 ± 0.20	± 10%		C4532CH2W473K230KA		
			± 5%		C4532CH2W473J230KA		
	4532	3.20 ± 0.30	± 10%	C4532CH2J473K320KA		C4532CH2E473K320KA	
			± 5%	C4532CH2J473J320KA		C4532CH2E473J320KA	
68 nF	3225	2.30 ± 0.20	± 10%				C3225CH2A683K230AA
			± 5%				C3225CH2A683J230AA
		2.30 ± 0.20	± 10%			C4532CH2E683K230KN	
			± 5%			C4532CH2E683J230KN	
	4532	2.50 ± 0.30	± 10%				C4532CH2A683K250KA
			± 5%				C4532CH2A683J250KA
		3.20 ± 0.30	± 10%		C4532CH2W683K320KA		
			± 5%		C4532CH2W683J320KA		
	5750	2.30 ± 0.20	± 10%	C5750CH2J683K230KC			
			± 5%	C5750CH2J683J230KC			
100 nF	4532	3.20 ± 0.30	± 10%			C4532CH2E104K320KN	C4532CH2A104K320KA
			± 5%			C4532CH2E104J320KN	C4532CH2A104J320KA
	5750	2.80 ± 0.30	± 10%	C5750CH2J104K280KC	C5750CH2W104J280KA		
			± 5%	C5750CH2J104J280KC	C5750CH2W104K280KA		
150 nF	5750	2.30 ± 0.20	± 10%			C5750CH2E154K230KN	C5750CH2A154K230KA
			± 5%			C5750CH2E154J230KN	C5750CH2A154J230KA

种类 2 (高介电率类)

温度特性: JB (-25 ~ +85°C、±10%)

电容	尺寸	厚度 (mm)	电容容差	目录型号		
				额定电压 Edc : 630V	额定电压 Edc : 250V	额定电压 Edc : 100V
1 nF	1608	0.80 ± 0.10	± 10%			C1608JB2A102K080AA
			± 20%			C1608JB2A102M080AA
	2012	0.85 ± 0.15	± 10%		C2012JB2E102K085AA	C2012JB2A102K085AA
			± 20%		C2012JB2E102M085AA	C2012JB2A102M085AA
	3216	1.15 ± 0.10	± 10%	C3216JB2J102K115AA		
			± 20%	C3216JB2J102M115AA		
1.5 nF	1608	0.80 ± 0.10	± 10%			C1608JB2A152K080AA
			± 20%			C1608JB2A152M080AA
	2012	0.85 ± 0.15	± 10%		C2012JB2E152K085AA	C2012JB2A152K085AA
			± 20%		C2012JB2E152M085AA	C2012JB2A152M085AA



电容 范围表

种类 2 (高介电率类)

温度特性: JB (-25 ~ +85℃、±10%)

电容	尺寸	厚度 (mm)	电容容差	目录型号		
				额定电压 E _{dc} : 630V	额定电压 E _{dc} : 250V	额定电压 E _{dc} : 100V
1.5 nF	3216	1.15 ± 0.10	± 10%	C3216JB2J152K115AA		
			± 20%	C3216JB2J152M115AA		
2.2 nF	1608	0.80 ± 0.10	± 10%			C1608JB2A222K080AA
			± 20%			C1608JB2A222M080AA
	2012	0.85 ± 0.15	± 10%		C2012JB2E222K085AA	C2012JB2A222K085AA
			± 20%		C2012JB2E222M085AA	C2012JB2A222M085AA
	3216	1.15 ± 0.10	± 10%	C3216JB2J222K115AA		
			± 20%	C3216JB2J222M115AA		
3.3 nF	1608	0.80 ± 0.10	± 10%			C1608JB2A332K080AA
			± 20%			C1608JB2A332M080AA
	2012	0.85 ± 0.15	± 10%		C2012JB2E332K085AA	C2012JB2A332K085AA
			± 20%		C2012JB2E332M085AA	C2012JB2A332M085AA
	3216	1.15 ± 0.10	± 10%	C3216JB2J332K115AA		
			± 20%	C3216JB2J332M115AA		
4.7 nF	1608	0.80 ± 0.10	± 10%			C1608JB2A472K080AA
			± 20%			C1608JB2A472M080AA
	2012	0.85 ± 0.15	± 10%		C2012JB2E472K085AA	C2012JB2A472K085AA
			± 20%		C2012JB2E472M085AA	C2012JB2A472M085AA
	3216	1.15 ± 0.10	± 10%	C3216JB2J472K115AA		
			± 20%	C3216JB2J472M115AA		
6.8 nF	1608	0.80 ± 0.10	± 10%			C1608JB2A682K080AA
			± 20%			C1608JB2A682M080AA
	2012	0.85 ± 0.15	± 10%			C2012JB2A682K085AA
			± 20%			C2012JB2A682M085AA
		1.25 ± 0.20	± 10%		C2012JB2E682K125AA	
			± 20%		C2012JB2E682M125AA	
	3216	1.15 ± 0.10	± 10%	C3216JB2J682K115AA		
			± 20%	C3216JB2J682M115AA		
10 nF	1608	0.80 ± 0.10	± 10%			C1608JB2A103K080AA
			± 20%			C1608JB2A103M080AA
	2012	0.85 ± 0.15	± 10%			C2012JB2A103K085AA
			± 20%			C2012JB2A103M085AA
		1.25 ± 0.20	± 10%		C2012JB2E103K125AA	
			± 20%		C2012JB2E103M125AA	
	3216	1.15 ± 0.10	± 10%	C3216JB2J103K115AA		
			± 20%	C3216JB2J103M115AA		
15 nF	1608	0.80 ± 0.10	± 10%			C1608JB2A153K080AA
			± 20%			C1608JB2A153M080AA
	2012	1.25 ± 0.20	± 10%		C2012JB2E153K125AA	C2012JB2A153K125AA
			± 20%		C2012JB2E153M125AA	C2012JB2A153M125AA
		1.15 ± 0.10	± 10%		C3216JB2E153K115AA	
			± 20%		C3216JB2E153M115AA	
	3216	1.30 ± 0.10	± 10%	C3216JB2J153K130AA		
			± 20%	C3216JB2J153M130AA		
22 nF	1608	0.80 ± 0.10	± 10%			C1608JB2A223K080AA
			± 20%			C1608JB2A223M080AA
	2012	1.25 ± 0.20	± 10%		C2012JB2E223K125AA	C2012JB2A223K125AA
			± 20%		C2012JB2E223M125AA	C2012JB2A223M125AA
		1.15 ± 0.10	± 10%		C3216JB2E223K115AA	
			± 20%		C3216JB2E223M115AA	
	3216	1.30 ± 0.10	± 10%	C3216JB2J223K130AA		
			± 20%	C3216JB2J223M130AA		
33 nF	2012	1.25 ± 0.20	± 10%			C2012JB2A333K125AA
			± 20%			C2012JB2A333M125AA
	3216	1.15 ± 0.10	± 10%			C3216JB2A333K115AA
			± 20%			C3216JB2A333M115AA
		1.60 ± 0.20	± 10%	C3216JB2J333K160AA	C3216JB2E333K160AA	
			± 20%	C3216JB2J333M160AA	C3216JB2E333M160AA	
47 nF	2012	1.25 ± 0.20	± 10%			C2012JB2A473K125AA
			± 20%			C2012JB2A473M125AA



电容 范围表

种类 2 (高介电率类)

温度特性: JB (-25 ~ +85℃、±10%)

电容	尺寸	厚度 (mm)	电容容差	目录型号		
				额定电压 Edc : 630V	额定电压 Edc : 250V	额定电压 Edc : 100V
47 nF	3216	1.15 ± 0.10	± 10%			C3216JB2A473K115AA
			± 20%			C3216JB2A473M115AA
		1.60 ± 0.20	± 10%		C3216JB2E473K160AA	
			± 20%		C3216JB2E473M160AA	
	3225	2.00 ± 0.20	± 10%	C3225JB2J473K200AA		
			± 20%	C3225JB2J473M200AA		
68 nF	2012	0.85 ± 0.15	± 10%			C2012JB2A683K085AA
			± 20%			C2012JB2A683M085AA
	3216	1.60 ± 0.20	± 10%		C3216JB2E683K160AA	C3216JB2A683K160AA
			± 20%		C3216JB2E683M160AA	C3216JB2A683M160AA
	3225	2.00 ± 0.20	± 10%	C3225JB2J683K200AA		
			± 20%	C3225JB2J683M200AA		
100 nF	4532	1.60 ± 0.20	± 10%	C4532JB2J683K160KA		
			± 20%	C4532JB2J683M160KA		
	2012	1.25 ± 0.20	± 10%			C2012JB2A104K125AA
			± 20%			C2012JB2A104M125AA
		1.60 ± 0.20	± 10%		C3216JB2E104K160AA	C3216JB2A104K160AA
			± 20%		C3216JB2E104M160AA	C3216JB2A104M160AA
150 nF	3225	2.00 ± 0.20	± 10%		C3225JB2E104K200AA	
			± 20%		C3225JB2E104M200AA	
	4532	1.60 ± 0.20	± 10%	C4532JB2J104K230KA		
			± 20%	C4532JB2J104M230KA		
	3216	1.60 ± 0.20	± 10%			C3216JB2A154K160AA
			± 20%			C3216JB2A154M160AA
220 nF	3225	2.00 ± 0.20	± 10%		C3225JB2E154K200AA	
			± 20%		C3225JB2E154M200AA	
	4532	1.60 ± 0.20	± 10%		C4532JB2E154K160KA	
			± 20%		C4532JB2E154M160KA	
	5750	1.60 ± 0.20	± 10%	C5750JB2J154K160KA		
			± 20%	C5750JB2J154M160KA		
330 nF	3216	1.15 ± 0.10	± 10%			C3216JB2A224K115AA
			± 20%			C3216JB2A224M115AA
	3225	2.00 ± 0.20	± 10%		C3225JB2E224K200AA	
			± 20%		C3225JB2E224M200AA	
	4532	2.30 ± 0.20	± 10%		C4532JB2E224K230KA	
			± 20%		C4532JB2E224M230KA	
470 nF	5750	2.30 ± 0.20	± 10%	C5750JB2J224K230KA		
			± 20%	C5750JB2J224M230KA		
	3216	1.30 ± 0.10	± 10%			C3216JB2A334K130AA
			± 20%			C3216JB2A334M130AA
	3225	2.00 ± 0.20	± 10%			C3225JB2A334K200AA
			± 20%			C3225JB2A334M200AA
680 nF	4532	2.30 ± 0.20	± 10%		C4532JB2E334K230KA	
			± 20%		C4532JB2E334M230KA	
	5750	1.60 ± 0.20	± 10%		C5750JB2E334K160KA	
			± 20%		C5750JB2E334M160KA	
	3216	1.60 ± 0.20	± 10%			C3216JB2A474K160AA
			± 20%			C3216JB2A474M160AA
750 nF	3225	2.00 ± 0.20	± 10%			C3225JB2A474K200AA
			± 20%			C3225JB2A474M200AA
	4532	2.30 ± 0.20	± 10%		C4532JB2E474K230KA	
			± 20%		C4532JB2E474M230KA	
	5750	2.30 ± 0.20	± 10%		C5750JB2E474K230KA	
			± 20%		C5750JB2E474M230KA	
1000 nF	3216	1.60 ± 0.20	± 10%			C3216JB2A684K160AA
			± 20%			C3216JB2A684M160AA
	3225	1.60 ± 0.20	± 10%			C3225JB2A684K160AA
			± 20%			C3225JB2A684M160AA
	4532	2.30 ± 0.20	± 10%			C4532JB2A684K230KA
			± 20%			C4532JB2A684M230KA



电容 范围表

种类 2 (高介电率类)

温度特性: JB (-25 ~ +85℃、±10%)

电容	尺寸	厚度 (mm)	电容容差	目录型号		
				额定电压 Edc : 630V	额定电压 Edc : 250V	额定电压 Edc : 100V
680 nF	5750	1.60 ± 0.20	± 10%			C5750JB2A684K160KA
			± 20%			C5750JB2A684M160KA
		2.30 ± 0.20	± 10%		C5750JB2E684K230KA	
			± 20%		C5750JB2E684M230KA	
1 μF	3216	1.60 ± 0.20	± 10%			C3216JB2A105K160AA
			± 20%			C3216JB2A105M160AA
	3225	2.00 ± 0.20	± 10%			C3225JB2A105K200AA
			± 20%			C3225JB2A105M200AA
	4532	2.30 ± 0.20	± 10%			C4532JB2A105K230KA
			± 20%			C4532JB2A105M230KA
	5750	2.30 ± 0.20	± 10%		C5750JB2E105K230KA	C5750JB2A105K230KA
			± 20%		C5750JB2E105M230KA	C5750JB2A105M230KA
1.5 μF	3225	2.00 ± 0.20	± 10%			C3225JB2A155K200AB
			± 20%			C3225JB2A155M200AB
	4532	2.30 ± 0.20	± 10%			C4532JB2A155K230KA
			± 20%			C4532JB2A155M230KA
	5750	2.30 ± 0.20	± 10%			C5750JB2A155K230KA
			± 20%			C5750JB2A155M230KA
2.2 μF	3225	2.30 ± 0.20	± 10%			C3225JB2A225K230AB
			± 20%			C3225JB2A225M230AB
	4532	2.30 ± 0.20	± 10%			C4532JB2A225K230KA
			± 20%			C4532JB2A225M230KA
	5750	2.30 ± 0.20	± 10%			C5750JB2A225K230KA
			± 20%			C5750JB2A225M230KA
3.3 μF	5750	2.30 ± 0.20	± 10%			C5750JB2A335K230KA
			± 20%			C5750JB2A335M230KA
4.7 μF	5750	2.30 ± 0.20	± 10%			C5750JB2A475K230KA
			± 20%			C5750JB2A475M230KA

种类 2 (高介电率类)

温度特性: X5R (-55 ~ +85℃、±15%)

电容	尺寸	厚度 (mm)	电容容差	目录型号		
				额定电压 Edc : 630V	额定电压 Edc : 250V	额定电压 Edc : 100V
1 nF	1608	0.80 ± 0.10	± 10%			C1608X5R2A102K080AA
			± 20%			C1608X5R2A102M080AA
	2012	0.85 ± 0.15	± 10%		C2012X5R2E102K085AA	
			± 20%		C2012X5R2E102M085AA	
1.5 nF	3216	1.15 ± 0.10	± 10%	C3216X5R2J102K115AA		
			± 20%	C3216X5R2J102M115AA		
	1608	0.80 ± 0.10	± 10%			C1608X5R2A152K080AA
			± 20%			C1608X5R2A152M080AA
	2012	0.85 ± 0.15	± 10%		C2012X5R2E152K085AA	
			± 20%		C2012X5R2E152M085AA	
2.2 nF	3216	1.15 ± 0.10	± 10%	C3216X5R2J152K115AA		
			± 20%	C3216X5R2J152M115AA		
	1608	0.80 ± 0.10	± 10%			C1608X5R2A222K080AA
			± 20%			C1608X5R2A222M080AA
	2012	0.85 ± 0.15	± 10%		C2012X5R2E222K085AA	
			± 20%		C2012X5R2E222M085AA	
3.3 nF	3216	1.15 ± 0.10	± 10%	C3216X5R2J222K115AA		
			± 20%	C3216X5R2J222M115AA		
	1608	0.80 ± 0.10	± 10%			C1608X5R2A332K080AA
			± 20%			C1608X5R2A332M080AA
	2012	0.85 ± 0.15	± 10%		C2012X5R2E332K085AA	
			± 20%		C2012X5R2E332M085AA	
4.7 nF	3216	1.15 ± 0.10	± 10%	C3216X5R2J332K115AA		
			± 20%	C3216X5R2J332M115AA		
	1608	0.80 ± 0.10	± 10%			C1608X5R2A472K080AA
			± 20%			C1608X5R2A472M080AA



电容 范围表

种类 2 (高介电率类)

温度特性: X5R (-55 ~ +85°C、±15%)

电容	尺寸	厚度 (mm)	电容容差	目录型号		
				额定电压 E _{dc} : 630V	额定电压 E _{dc} : 250V	额定电压 E _{dc} : 100V
4.7 nF	2012	0.85 ± 0.15	± 10%		C2012X5R2E472K085AA	
			± 20%		C2012X5R2E472M085AA	
	3216	1.15 ± 0.10	± 10%	C3216X5R2J472K115AA		
			± 20%	C3216X5R2J472M115AA		
6.8 nF	1608	0.80 ± 0.10	± 10%			C1608X5R2A682K080AA
			± 20%			C1608X5R2A682M080AA
	2012	1.25 ± 0.20	± 10%		C2012X5R2E682K125AA	
			± 20%		C2012X5R2E682M125AA	
	3216	1.15 ± 0.10	± 10%	C3216X5R2J682K115AA		
			± 20%	C3216X5R2J682M115AA		
10 nF	1608	0.80 ± 0.10	± 10%			C1608X5R2A103K080AA
			± 20%			C1608X5R2A103M080AA
	2012	1.25 ± 0.20	± 10%		C2012X5R2E103K125AA	
			± 20%		C2012X5R2E103M125AA	
	3216	1.15 ± 0.10	± 10%	C3216X5R2J103K115AA		
			± 20%	C3216X5R2J103M115AA		
15 nF	1608	0.80 ± 0.10	± 10%			C1608X5R2A153K080AA
			± 20%			C1608X5R2A153M080AA
	2012	1.25 ± 0.20	± 10%		C2012X5R2E153K125AA	
			± 20%		C2012X5R2E153M125AA	
	3216	1.30 ± 0.10	± 10%	C3216X5R2J153K130AA		
			± 20%	C3216X5R2J153M130AA		
22 nF	1608	0.80 ± 0.10	± 10%			C1608X5R2A223K080AA
			± 20%			C1608X5R2A223M080AA
	2012	1.25 ± 0.20	± 10%		C2012X5R2E223K125AA	
			± 20%		C2012X5R2E223M125AA	
	3216	1.30 ± 0.10	± 10%	C3216X5R2J223K130AA		
			± 20%	C3216X5R2J223M130AA		
33 nF	1608	0.80 ± 0.10	± 10%			C2012X5R2A333K125AA
			± 20%			C2012X5R2A333M125AA
	2012	1.25 ± 0.20	± 10%			
			± 20%			
	3216	1.60 ± 0.20	± 10%	C3216X5R2J333K160AA	C3216X5R2E333K160AA	
			± 20%	C3216X5R2J333M160AA	C3216X5R2E333M160AA	
47 nF	2012	1.25 ± 0.20	± 10%			C2012X5R2A473K125AA
			± 20%			C2012X5R2A473M125AA
	3216	1.60 ± 0.20	± 10%		C3216X5R2E473K160AA	
			± 20%		C3216X5R2E473M160AA	
	3225	2.00 ± 0.20	± 10%	C3225X5R2J473K200AA		
			± 20%	C3225X5R2J473M200AA		
68 nF	2012	0.85 ± 0.15	± 10%			C2012X5R2A683K085AA
			± 20%			C2012X5R2A683M085AA
	3216	1.60 ± 0.20	± 10%		C3216X5R2E683K160AA	
			± 20%		C3216X5R2E683M160AA	
	3225	2.00 ± 0.20	± 10%	C3225X5R2J683K200AA		
			± 20%	C3225X5R2J683M200AA		
100 nF	2012	1.25 ± 0.20	± 10%			C2012X5R2A104K125AA
			± 20%			C2012X5R2A104M125AA
	3216	1.60 ± 0.20	± 10%		C3216X5R2E104K160AA	
			± 20%		C3216X5R2E104M160AA	
	4532	2.30 ± 0.20	± 10%	C4532X5R2J104K230KA		
			± 20%	C4532X5R2J104M230KA		
150 nF	3216	1.60 ± 0.20	± 10%			C3216X5R2A154K160AA
			± 20%			C3216X5R2A154M160AA
	3225	2.00 ± 0.20	± 10%		C3225X5R2E154K200AA	
			± 20%		C3225X5R2E154M200AA	
	5750	1.60 ± 0.20	± 10%	C5750X5R2J154K160KA		
			± 20%	C5750X5R2J154M160KA		
220 nF	3216	1.15 ± 0.10	± 10%			C3216X5R2A224K115AA
			± 20%			C3216X5R2A224M115AA
	3225	2.00 ± 0.20	± 10%		C3225X5R2E224K200AA	
			± 20%		C3225X5R2E224M200AA	



电容 范围表

种类 2 (高介电率类)

温度特性: X5R (-55 ~ +85℃、±15%)

电容	尺寸	厚度 (mm)	电容容差	目录型号		
				额定电压 E _{dc} : 630V	额定电压 E _{dc} : 250V	额定电压 E _{dc} : 100V
220 nF	5750	2.30 ± 0.20	± 10%	C5750X5R2J224K230KA		
			± 20%	C5750X5R2J224M230KA		
330 nF	3216	1.30 ± 0.10	± 10%			C3216X5R2A334K130AA
			± 20%			C3216X5R2A334M130AA
	4532	2.30 ± 0.20	± 10%	C4532X5R2E334K230KA		
			± 20%	C4532X5R2E334M230KA		
470 nF	3216	1.60 ± 0.20	± 10%			C3216X5R2A474K160AA
			± 20%			C3216X5R2A474M160AA
	4532	2.30 ± 0.20	± 10%	C4532X5R2E474K230KA		
			± 20%	C4532X5R2E474M230KA		
680 nF	3216	1.60 ± 0.20	± 10%			C3216X5R2A684K160AA
			± 20%			C3216X5R2A684M160AA
	5750	2.30 ± 0.20	± 10%	C5750X5R2E684K230KA		
			± 20%	C5750X5R2E684M230KA		
1 μF	3216	1.60 ± 0.20	± 10%			C3216X5R2A105K160AA
			± 20%			C3216X5R2A105M160AA
	5750	2.30 ± 0.20	± 10%	C5750X5R2E105K230KA		
			± 20%	C5750X5R2E105M230KA		
1.5 μF	3225	2.00 ± 0.20	± 10%			C3225X5R2A155K200AB
			± 20%			C3225X5R2A155M200AB
2.2 μF	3225	2.30 ± 0.20	± 10%			C3225X5R2A225K230AB
			± 20%			C3225X5R2A225M230AB
3.3 μF	5750	2.30 ± 0.20	± 10%			C5750X5R2A335K230KA
			± 20%			C5750X5R2A335M230KA
4.7 μF	5750	2.30 ± 0.20	± 10%			C5750X5R2A475K230KA
			± 20%			C5750X5R2A475M230KA

种类 2 (高介电率类)

温度特性: X6S (-55 ~ +105℃、±22%)

电容	尺寸	厚度 (mm)	电容容差	目录型号	
				额定电压 E _{dc} : 450V	
1 μF	5750	2.50 ± 0.30	± 10%	C5750X6S2W105K250KA	
			± 20%	C5750X6S2W105M250KA	
2.2 μF	5750	2.50 ± 0.30	± 10%	C5750X6S2W225K250KA	
			± 20%	C5750X6S2W225M250KA	

种类 2 (高介电率类)

温度特性: X7R (-55 ~ +125℃、±15%)

电容	尺寸	厚度 (mm)	电容容差	目录型号		
				额定电压 E _{dc} : 630V	额定电压 E _{dc} : 250V	额定电压 E _{dc} : 100V
1 nF	1608	0.80 ± 0.10	± 10%			C1608X7R2A102K080AA
			± 20%			C1608X7R2A102M080AA
	2012	0.85 ± 0.15	± 10%		C2012X7R2E102K085AA	C2012X7R2A102K085AA
			± 20%		C2012X7R2E102M085AA	C2012X7R2A102M085AA
1.5 nF	3216	1.15 ± 0.15	± 10%	C3216X7R2J102K115AA		
			± 20%	C3216X7R2J102M115AA		
	1608	0.80 ± 0.10	± 10%			C1608X7R2A152K080AA
			± 20%			C1608X7R2A152M080AA
2.2 nF	2012	0.85 ± 0.15	± 10%		C2012X7R2E152K085AA	C2012X7R2A152K085AA
			± 20%		C2012X7R2E152M085AA	C2012X7R2A152M085AA
	3216	1.15 ± 0.15	± 10%	C3216X7R2J152K115AA		
			± 20%	C3216X7R2J152M115AA		
2.2 nF	1608	0.80 ± 0.10	± 10%			C1608X7R2A222K080AA
			± 20%			C1608X7R2A222M080AA
	2012	0.85 ± 0.15	± 10%		C2012X7R2E222K085AA	C2012X7R2A222K085AA
			± 20%		C2012X7R2E222M085AA	C2012X7R2A222M085AA
2.2 nF	3216	1.15 ± 0.15	± 10%	C3216X7R2J222K115AA		
			± 20%	C3216X7R2J222M115AA		



电容 范围表

种类 2 (高介电率类)

温度特性: X7R (-55 ~ +125°C、±15%)

电容	尺寸	厚度 (mm)	电容容差	目录型号		
				额定电压 Edc : 630V	额定电压 Edc : 250V	额定电压 Edc : 100V
3.3 nF	1608	0.80 ± 0.10	± 10%			C1608X7R2A332K080AA
			± 20%			C1608X7R2A332M080AA
	2012	0.85 ± 0.15	± 10%		C2012X7R2E332K085AA	C2012X7R2A332K085AA
			± 20%		C2012X7R2E332M085AA	C2012X7R2A332M085AA
	3216	1.15 ± 0.15	± 10%	C3216X7R2J332K115AA		
			± 20%	C3216X7R2J332M115AA		
4.7 nF	1608	0.80 ± 0.10	± 10%			C1608X7R2A472K080AA
			± 20%			C1608X7R2A472M080AA
	2012	0.85 ± 0.15	± 10%		C2012X7R2E472K085AA	C2012X7R2A472K085AA
			± 20%		C2012X7R2E472M085AA	C2012X7R2A472M085AA
	3216	1.15 ± 0.15	± 10%	C3216X7R2J472K115AA		
			± 20%	C3216X7R2J472M115AA		
6.8 nF	1608	0.80 ± 0.10	± 10%			C1608X7R2A682K080AA
			± 20%			C1608X7R2A682M080AA
	2012	0.85 ± 0.15	± 10%			C2012X7R2A682K085AA
			± 20%			C2012X7R2A682M085AA
	3216	1.15 ± 0.15	± 10%	C3216X7R2J682K115AA		
			± 20%	C3216X7R2J682M115AA		
10 nF	1608	0.80 ± 0.10	± 10%			C1608X7R2A103K080AA
			± 20%			C1608X7R2A103M080AA
	2012	0.85 ± 0.15	± 10%			C2012X7R2A103K085AA
			± 20%			C2012X7R2A103M085AA
	3216	1.15 ± 0.15	± 10%	C3216X7R2J103K115AA		
			± 20%	C3216X7R2J103M115AA		
15 nF	1608	0.80 ± 0.10	± 10%			C1608X7R2A153K080AA
			± 20%			C1608X7R2A153M080AA
	2012	1.25 ± 0.20	± 10%		C2012X7R2E153K125AA	C2012X7R2A153K125AA
			± 20%		C2012X7R2E153M125AA	C2012X7R2A153M125AA
	3216	1.15 ± 0.15	± 10%		C3216X7R2E153K115AA	
			± 20%		C3216X7R2E153M115AA	
22 nF	1608	0.80 ± 0.10	± 10%			C1608X7R2A223K080AA
			± 20%			C1608X7R2A223M080AA
	2012	1.25 ± 0.20	± 10%		C2012X7R2E223K125AA	C2012X7R2A223K125AA
			± 20%		C2012X7R2E223M125AA	C2012X7R2A223M125AA
	3216	1.15 ± 0.15	± 10%		C3216X7R2E223K115AA	
			± 20%		C3216X7R2E223M115AA	
33 nF	1608	0.80 ± 0.10	± 10%			C1608X7R2A223K080AA
			± 20%			C1608X7R2A223M080AA
	2012	1.25 ± 0.20	± 10%			C2012X7R2A223K125AA
			± 20%			C2012X7R2A223M125AA
	3216	1.15 ± 0.15	± 10%			C3216X7R2A333K115AA
			± 20%			C3216X7R2A333M115AA
47 nF	1608	0.80 ± 0.10	± 10%			C1608X7R2A223K080AA
			± 20%			C1608X7R2A223M080AA
	2012	1.25 ± 0.20	± 10%			C2012X7R2A223K125AA
			± 20%			C2012X7R2A223M125AA
	3216	1.15 ± 0.15	± 10%			C3216X7R2A223K115AA
			± 20%			C3216X7R2A223M115AA
68 nF	1608	0.80 ± 0.10	± 10%			C1608X7R2A223K080AA
			± 20%			C1608X7R2A223M080AA
	2012	1.25 ± 0.20	± 10%			C2012X7R2A223K125AA
			± 20%			C2012X7R2A223M125AA
	3216	1.15 ± 0.15	± 10%			C3216X7R2A223K115AA
			± 20%			C3216X7R2A223M115AA



电容 范围表

种类 2 (高介电率类)

温度特性: X7R (-55 ~ +125°C、±15%)

电容	尺寸	厚度 (mm)	电容容差	目录型号		
				额定电压 E _{dc} : 630V	额定电压 E _{dc} : 250V	额定电压 E _{dc} : 100V
68 nF	3216	1.60 ± 0.20	± 10%		C3216X7R2E683K160AA	C3216X7R2A683K160AA
			± 20%		C3216X7R2E683M160AA	C3216X7R2A683M160AA
	3225	2.00 ± 0.20	± 10%	C3225X7R2J683K200AA		
			± 20%	C3225X7R2J683M200AA		
	4532	1.60 ± 0.20	± 10%	C4532X7R2J683K160KA		
			± 20%	C4532X7R2J683M160KA		
100 nF	2012	1.25 ± 0.20	± 10%			C2012X7R2A104K125AA
			± 20%			C2012X7R2A104M125AA
	3216	1.60 ± 0.20	± 10%		C3216X7R2E104K160AA	C3216X7R2A104K160AA
			± 20%		C3216X7R2E104M160AA	C3216X7R2A104M160AA
	3225	2.00 ± 0.20	± 10%		C3225X7R2E104K200AA	
			± 20%		C3225X7R2E104M200AA	
150 nF	4532	2.30 ± 0.20	± 10%	C4532X7R2J104K230KA		
			± 20%	C4532X7R2J104M230KA		
	3216	1.60 ± 0.20	± 10%			C3216X7R2A154K160AA
			± 20%			C3216X7R2A154M160AA
	3225	2.00 ± 0.20	± 10%		C3225X7R2E154K200AA	
			± 20%		C3225X7R2E154M200AA	
220 nF	4532	1.60 ± 0.20	± 10%		C4532X7R2E154K160KA	
			± 20%		C4532X7R2E154M160KA	
	5750	1.60 ± 0.20	± 10%	C5750X7R2J154K160KA		
			± 20%	C5750X7R2J154M160KA		
	3216	1.15 ± 0.15	± 10%			C3216X7R2A224K115AA
			± 20%			C3216X7R2A224M115AA
330 nF	3225	2.00 ± 0.20	± 10%		C3225X7R2E224K200AA	
			± 20%		C3225X7R2E224M200AA	
	4532	2.30 ± 0.20	± 10%		C4532X7R2E224K230KA	
			± 20%		C4532X7R2E224M230KA	
	5750	2.30 ± 0.20	± 10%	C5750X7R2J224K230KA		
			± 20%	C5750X7R2J224M230KA		
470 nF	3216	1.30 ± 0.20	± 10%			C3216X7R2A334K130AA
			± 20%			C3216X7R2A334M130AA
	3225	2.00 ± 0.20	± 10%			C3225X7R2A334K200AA
			± 20%			C3225X7R2A334M200AA
	4532	2.30 ± 0.20	± 10%		C4532X7R2E334K230KA	
			± 20%		C4532X7R2E334M230KA	
680 nF	5750	1.60 ± 0.20	± 10%		C5750X7R2E334K160KA	
			± 20%		C5750X7R2E334M160KA	
	3216	1.60 ± 0.20	± 10%			C3216X7R2A474K160AA
			± 20%			C3216X7R2A474M160AA
	3225	2.00 ± 0.20	± 10%			C3225X7R2A474K200AA
			± 20%			C3225X7R2A474M200AA
1 μF	4532	2.30 ± 0.20	± 10%		C4532X7R2E474K230KA	
			± 20%		C4532X7R2E474M230KA	
	5750	2.30 ± 0.20	± 10%		C5750X7R2E474K230KA	
			± 20%		C5750X7R2E474M230KA	
	3216	1.60 ± 0.20	± 10%			C3216X7R2A684K160AA
			± 20%			C3216X7R2A684M160AA
1 μF	3225	1.60 ± 0.20	± 10%			C3225X7R2A684K160AA
			± 20%			C3225X7R2A684M160AA
	4532	2.30 ± 0.20	± 10%		C4532X7R2A684K230KA	
			± 20%		C4532X7R2A684M230KA	
	5750	1.60 ± 0.20	± 10%			C5750X7R2A684K160KA
			± 20%			C5750X7R2A684M160KA
1 μF	5750	2.30 ± 0.20	± 10%		C5750X7R2E684K230KA	
			± 20%		C5750X7R2E684M230KA	
	3216	1.60 ± 0.20	± 10%			C3216X7R2A105K160AA
			± 20%			C3216X7R2A105M160AA
	3225	2.00 ± 0.20	± 10%			C3225X7R2A105K200AA
			± 20%			C3225X7R2A105M200AA



电容 范围表

种类 2 (高介电率类)

温度特性: X7R (-55 ~ +125℃、±15%)

电容	尺寸	厚度 (mm)	电容容差	目录型号		
				额定电压 E _{dc} : 630V	额定电压 E _{dc} : 250V	额定电压 E _{dc} : 100V
1 μF	4532	2.30 ± 0.20	± 10%			C4532X7R2A105K230KA
			± 20%			C4532X7R2A105M230KA
	5750	2.30 ± 0.20	± 10%		C5750X7R2E105K230KA	C5750X7R2A105K230KA
			± 20%		C5750X7R2E105M230KA	C5750X7R2A105M230KA
1.5 μF	3225	2.00 ± 0.20	± 10%			C3225X7R2A155K200AB
			± 20%			C3225X7R2A155M200AB
	4532	2.30 ± 0.20	± 10%			C4532X7R2A155K230KA
			± 20%			C4532X7R2A155M230KA
2.2 μF	5750	2.30 ± 0.20	± 10%			C5750X7R2A155K230KA
			± 20%			C5750X7R2A155M230KA
	3225	2.30 ± 0.20	± 10%			C3225X7R2A225K230AB
			± 20%			C3225X7R2A225M230AB
3.3 μF	4532	2.30 ± 0.20	± 10%			C4532X7R2A225K230KA
			± 20%			C4532X7R2A225M230KA
	5750	2.30 ± 0.20	± 10%			C5750X7R2A225K230KA
			± 20%			C5750X7R2A225M230KA
4.7 μF	5750	2.30 ± 0.20	± 10%			C5750X7R2A335K230KA
			± 20%			C5750X7R2A335M230KA
4.7 μF	5750	2.30 ± 0.20	± 10%			C5750X7R2A475K230KA
			± 20%			C5750X7R2A475M230KA

种类 2 (高介电率类)

温度特性: X7S (-55 ~ +125℃、±22%)

电容	尺寸	厚度 (mm)	电容容差	目录型号		
				额定电压 E _{dc} : 630V	额定电压 E _{dc} : 250V	额定电压 E _{dc} : 100V
1 nF	1005	0.50 ± 0.05	± 10%			C1005X7S2A102K050BB
			± 20%			C1005X7S2A102M050BB
1.5 nF	1005	0.50 ± 0.05	± 10%			C1005X7S2A152K050BB
			± 20%			C1005X7S2A152M050BB
2.2 nF	1005	0.50 ± 0.05	± 10%			C1005X7S2A222K050BB
			± 20%			C1005X7S2A222M050BB
3.3 nF	1005	0.50 ± 0.05	± 10%			C1005X7S2A332K050BB
			± 20%			C1005X7S2A332M050BB
4.7 nF	1005	0.50 ± 0.05	± 10%			C1005X7S2A472K050BB
			± 20%			C1005X7S2A472M050BB
6.8 nF	1005	0.50 ± 0.05	± 10%			C1005X7S2A682K050BB
			± 20%			C1005X7S2A682M050BB
10 nF	1005	0.50 ± 0.05	± 10%			C1005X7S2A103K050BB
			± 20%			C1005X7S2A103M050BB
33 nF	1608	0.80 ± 0.10	± 10%			C1608X7S2A333K080AB
			± 20%			C1608X7S2A333M080AB
47 nF	1608	0.80 ± 0.10	± 10%			C1608X7S2A473K080AB
			± 20%			C1608X7S2A473M080AB
68 nF	1608	0.80 ± 0.10	± 10%			C1608X7S2A683K080AB
			± 20%			C1608X7S2A683M080AB
100 nF	1608	0.80 ± 0.10	± 10%			C1608X7S2A104K080AB
			± 20%			C1608X7S2A104M080AB
150 nF	2012	0.85 ± 0.15	± 10%			C2012X7S2A154K085AB
			± 20%			C2012X7S2A154M085AB
220 nF	2012	0.85 ± 0.15	± 10%			C2012X7S2A224K085AB
			± 20%			C2012X7S2A224M085AB
330 nF	2012	1.25 ± 0.20	± 10%			C2012X7S2A334K125AB
			± 20%			C2012X7S2A334M125AB
470 nF	2012	1.25 ± 0.20	± 10%			C2012X7S2A474K125AB
			± 20%			C2012X7S2A474M125AB
680 nF	2012	1.25 ± 0.20	± 10%			C2012X7S2A684K125AB
			± 20%			C2012X7S2A684M125AB
1 μF	2012	1.25 ± 0.20	± 10%			C2012X7S2A105K125AB
			± 20%			C2012X7S2A105M125AB



电容 范围表

种类 2 (高介电率类)

温度特性: X7S (-55 ~ +125℃、±22%)

电容	尺寸	厚度 (mm)	电容容差	目录型号		
				额定电压 Edc : 630V	额定电压 Edc : 250V	额定电压 Edc : 100V
1.5 μF	3216	1.60 ± 0.20	± 10%			C3216X7S2A155K160AB
			± 20%			C3216X7S2A155M160AB
2.2 μF	3216	1.60 ± 0.20	± 10%			C3216X7S2A225K160AB
			± 20%			C3216X7S2A225M160AB
3.3 μF	3216	1.60 ± 0.20	± 10%			C3216X7S2A335K160AB
			± 20%			C3216X7S2A335M160AB
	3225	2.00 ± 0.20	± 10%			C3225X7S2A335K200AB
			± 20%			C3225X7S2A335M200AB
	4532	2.00 ± 0.20	± 10%			C4532X7S2A335K200KB
			± 20%			C4532X7S2A335M200KB
4.7 μF	3225	2.00 ± 0.20	± 10%			C3225X7S2A475K200AB
			± 20%			C3225X7S2A475M200AB
	4532	2.30 ± 0.20	± 10%			C4532X7S2A475K230KB
			± 20%			C4532X7S2A475M230KB
6.8 μF	5750	2.00 ± 0.20	± 10%			C5750X7S2A685K200KB
			± 20%			C5750X7S2A685M200KB
10 μF	5750	2.30 ± 0.20	± 10%			C5750X7S2A106K230KB
			± 20%			C5750X7S2A106M230KB
15 μF	5750	2.50 ± 0.30	± 20%			C5750X7S2A156M250KB

种类 2 (高介电率类)

温度特性: X7T (-55 ~ +125℃、+22/-33%)

电容	尺寸	厚度 (mm)	电容容差	目录型号			
				额定电压 Edc : 630V	额定电压 Edc : 450V	额定电压 Edc : 350V	额定电压 Edc : 250V
10 nF	2012	0.85 ± 0.15	± 10%		C2012X7T2W103K085AA	C2012X7T2V103K085AA	
			± 20%		C2012X7T2W103M085AA	C2012X7T2V103M085AA	
	3216	0.85 ± 0.10	± 10%	C3216X7T2J103K085AC			
			± 20%	C3216X7T2J103M085AC			
15 nF	2012	0.85 ± 0.15	± 10%		C2012X7T2W153K085AA	C2012X7T2V153K085AA	
			± 20%		C2012X7T2W153M085AA	C2012X7T2V153M085AA	
	3216	0.85 ± 0.10	± 10%	C3216X7T2J153K085AC			
			± 20%	C3216X7T2J153M085AC			
22 nF	2012	1.25 ± 0.20	± 10%		C2012X7T2W223K125AA	C2012X7T2V223K125AA	
			± 20%		C2012X7T2W223M125AA	C2012X7T2V223M125AA	
	3216	1.15 ± 0.10	± 10%	C3216X7T2J223K115AC			
			± 20%	C3216X7T2J223M115AC			
33 nF	2012	1.25 ± 0.20	± 10%		C2012X7T2W333K125AA	C2012X7T2V333K125AA	C2012X7T2E333K125AA
			± 20%		C2012X7T2W333M125AA	C2012X7T2V333M125AA	C2012X7T2E333M125AA
	3216	1.15 ± 0.10	± 10%	C3216X7T2J333K115AC			
			± 20%	C3216X7T2J333M115AC			
47 nF	2012	1.25 ± 0.20	± 10%		C2012X7T2W473K125AA	C2012X7T2V473K125AA	C2012X7T2E473K125AA
			± 20%		C2012X7T2W473M125AA	C2012X7T2V473M125AA	C2012X7T2E473M125AA
	3216	1.60 ± 0.20	± 10%	C3216X7T2J473K160AC			
			± 20%	C3216X7T2J473M160AC			
68 nF	2012	1.25 ± 0.20	± 10%				C2012X7T2E683K125AA
			± 20%				C2012X7T2E683M125AA
	3216	1.30 ± 0.10	± 10%		C3216X7T2W683K130AA	C3216X7T2V683K130AA	
			± 20%		C3216X7T2W683M130AA	C3216X7T2V683M130AA	
100 nF	2012	1.25 ± 0.20	± 10%				C2012X7T2E104K125AA
			± 20%				C2012X7T2E104M125AA
	3216	1.60 ± 0.20	± 10%		C3216X7T2W104K160AA	C3216X7T2V104K160AA	
			± 20%		C3216X7T2W104M160AA	C3216X7T2V104M160AA	
150 nF	3225	1.60 ± 0.20	± 10%	C3225X7T2J104K160AC			
			± 20%	C3225X7T2J104M160AC			
	3216	1.30 ± 0.10	± 10%				C3216X7T2E154K130AA
			± 20%				C3216X7T2E154M130AA
	3225	2.00 ± 0.20	± 10%	C3225X7T2J154K200AC			
			± 20%	C3225X7T2J154M200AC			
	4532	1.60 ± 0.20	± 10%	C4532X7T2J154K160KC			
			± 20%	C4532X7T2J154M160KC			



电容 范围表

种类 2 (高介电率类)

温度特性: X7T (-55 ~ +125℃、+22/-33%)

电容	尺寸	厚度 (mm)	电容容差	目录型号			
				额定电压 Edc : 630V	额定电压 Edc : 450V	额定电压 Edc : 350V	额定电压 Edc : 250V
220 nF	3216	1.60 ± 0.20	± 10%				C3216X7T2E224K160AA
			± 20%				C3216X7T2E224M160AA
	3225	2.00 ± 0.20	± 10%		C3225X7T2W224K200AA		
			± 20%		C3225X7T2W224M200AA		
	4532	2.00 ± 0.20	± 10%	C4532X7T2J224K200KC			
			± 20%	C4532X7T2J224M200KC			
300 nF	4532	2.00 ± 0.20	± 10%	C4532X7T2J304K250KA			
			± 20%	C4532X7T2J304M250KA			
330 nF	3225	2.00 ± 0.20	± 10%				C3225X7T2E334K200AA
			± 20%				C3225X7T2E334M200AA
	4532	1.60 ± 0.20	± 10%		C4532X7T2W334K160KA		
			± 20%		C4532X7T2W334M160KA		
	5750	2.00 ± 0.20	± 10%	C5750X7T2J334K200KC			
			± 20%	C5750X7T2J334M200KC			
470 nF	4532	2.30 ± 0.20	± 10%		C4532X7T2W474K230KA		
			± 20%		C4532X7T2W474M230KA		
	5750	2.50 ± 0.30	± 10%	C5750X7T2J474K250KC			
			± 20%	C5750X7T2J474M250KC			
680 nF	4532	1.60 ± 0.20	± 10%				C4532X7T2E684K160KA
			± 20%				C4532X7T2E684M160KA
	5750	2.00 ± 0.20	± 10%		C5750X7T2W684K200KA		
			± 20%		C5750X7T2W684M200KA		
1 μF	4532	2.50 ± 0.30	± 10%				C4532X7T2E105K250KA
			± 20%				C4532X7T2E105M250KA
	5750	2.50 ± 0.30	± 10%		C5750X7T2W105K250KA		
			± 20%		C5750X7T2W105M250KA		
1.5 μF	5750	2.00 ± 0.20	± 10%				C5750X7T2E155K200KA
			± 20%				C5750X7T2E155M200KA
2.2 μF	5750	2.50 ± 0.30	± 10%				C5750X7T2E225K250KA
			± 20%				C5750X7T2E225M250KA